

1955

Corral

Val Rand


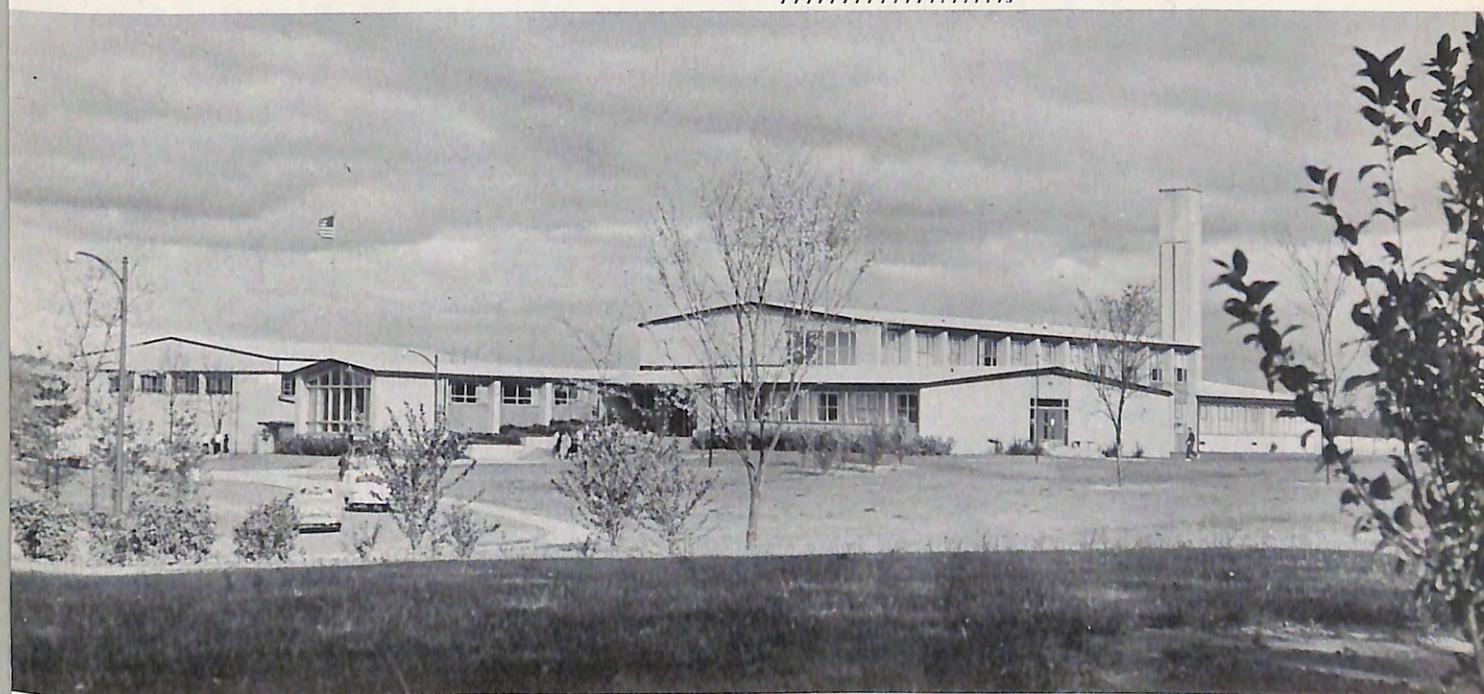
Barr. 410

113 W. Main St


Barr.

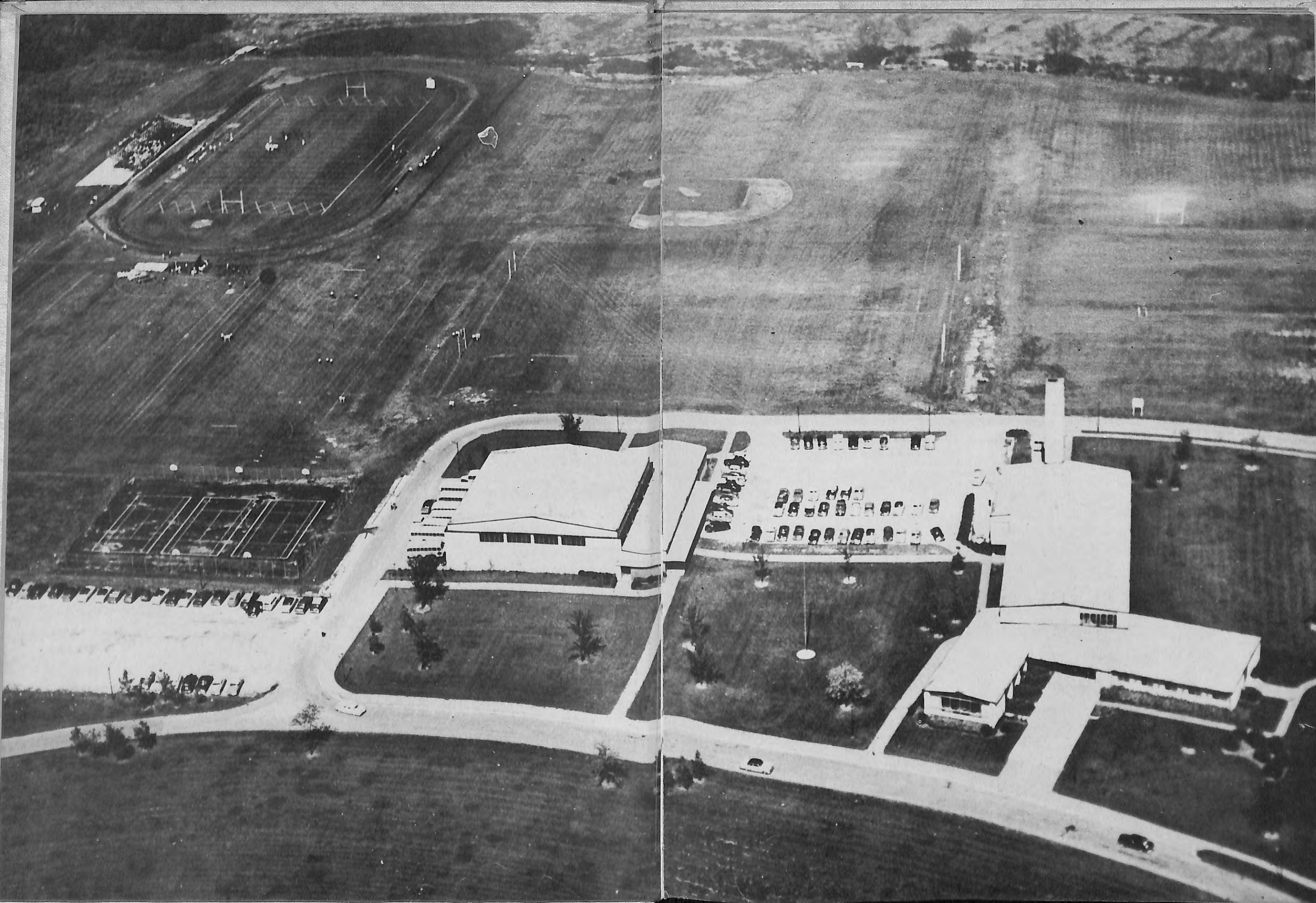


# 1955 CORRAL



**Barrington Cons. High School**  
**Barrington . . . Illinois**







R. Wilson McCoy, Sec'y.



Richard D. Sturtevant, Pres.



Thomas Z. Heyward

BOARD OF EDUCATION



Albert L. Krunfus

Robert B. Pelton

Wilfred Reetz

R. Channing Aspinwall



ROY C. TURNBAUGH  
Principal



F. C. THOMAS  
Superintendent of Schools



ROLLAND H. LUNDAHL  
Assistant Superintendent  
in Charge of Business

*Administration*



ELFRIEDA BOHLMANN



LOLA E. RIEKE



LUCILLE JOHNSON

*Office Staff*



OLA OLSEN



MARIE KAMPERT

# Faculty

1. KATHERINE BAER  
Vocal Music

2. FRANCES BAKER  
Latin

3. CARMON BIXLER  
Industrial Arts

4. MARTHA BOLING  
Librarian

5. TRUMAN CHILES  
Math., Bookkeeping

6. JOHN COOLEY  
Orchestra

7. TOM FREDERICK  
Phys. Ed., Coach

8. MARY ANN FRIBERG  
Girls' Phys. Ed.

9. RAYMOND HYLANDER  
Social Studies, Guidance

10. RICHARD JOHNSON  
English, Speech

11. HELEN KIENTZLE  
Mathematics, Guidance

12. ELLERY L. KNAKE  
Agriculture

13. V. P. LAGER  
Building Trades

14. ANNABEL LEONHARD  
English

15. BEVERLEY LOGAN  
English, Guidance



# Faculty

16. VINCENT LOMBARDO  
Spanish

17. ROBERT MADDING  
Phys. Ed., Coach

18. WILMA McBRIDE  
Commerce

19. LLOYD MELIS  
Speech Correction

20. CLIFFORD MORELL  
Band

21. ROBERT MURPHY  
Driver Training, Coach

22. ALAN PESHKIN  
Social Studies

23. ROSALIE RYMARCZUK  
Nurse

24. BEN RUSSO  
French, English

25. M. ANNETTE SHEEL  
Social Studies

26. WAYNE SIEGWORTH  
Chemistry, Physics, Coach

27. LEE T. SMILEY  
Art, Graphic Arts

28. FRANCES STEVENS  
Home Economics

29. MAUDE STROUSS  
English

30. GRACE WANDKE  
Mathematics

31. WILLARD WATSON  
Biology

# CORRAL STAFF



Cinder Somerville  
Editor



Don Timm  
Photographer



Paul Sitz  
Photographer



Ronnie Miller  
Printer



Bob Haberly  
Photographer

Mary Walbaum  
Business Manager



Charles Thomas  
Photographer



## ANNETTE BAADÉ

F.H.A. 1, 2; Pep Club 1; G.A.A. 1, 2, 3; String Ensemble 1, 2; Freshman Speech Club; Mixed Chorus 2; Masque & Wig 4; Make-Up Club 3, 4; A Cappella 2, 3, 4; Girls Glee Club 1, 2, 3; Girls Ensemble 2, 3, 4; Orchestra 1, 2; Natural History Club 4; Librarian 2; Typing Club 1, 3.

## SANDRA BECKER

Square Dance Club 1; Pep Club 1, 2; G.A.A. 1, 2, 3, 4; Modern Dance 3; Freshman Speech Club; A Cappella 2, 3, 4; Girls Glee Club 1, 2; Natural History Club 4; Twirler 1.

## JUDITH BERGREN

R.T.D.C. & D.S. 4; Broncho 2, 3; Travel Club 3; Hall Monitor 4; Masque & Wig 2; A Cappella 2; Girls Glee Club 1, 2; Girls Ensemble 3, 4; Natural History Club 4.

## BARTON BERNDTSON

Trans. North Shore Country Day School 4; R.T.D.C. & D.S. 4; Tennis 4; Barber Shoppers 4; Boys Glee Club 4; Camera Club 4.

# Seniors

## RALPH LARSON

R.T.D.C. & D.S. 3, 4; Student Council 1, 2, 3, 4, Treasurer 3; National Honor Society 3, 4; "B" Club 4; Football 1, 2, 3, 4; Track 3; Basketball 1; Class President 3, 4; Class Vice-President 1; Hall Monitor 3, 4; Boys Glee Club 3; Spanish Club 2, President; Natural History Club 1, 2; Chess Club 4.

## STANLEY CRONWALL

Football 2; Basketball 1; Tennis 3, 4; Class Vice-President 4; Barber Shoppers 3, 4; Hall Monitor 2; Creative Writing 1, 2, 3; Freshman Speech Club 1, President; "Kind Lady," "Connecticut Yankee in King Arthur's Court," Masque & Wig 3, 4; National Thespian Society 4; Radio Council 4; A Cappella 3, 4; Boys Glee Club 3, 4; Latin Club 1, 2, 3, Vice-President 3; Natural History Club 2, 3.

## MARY WALBAUM

Corral 3, 4, Business Manager 4; R.T.D.C. & D.S. 3; National Honor Society 2, 3, 4; Square Dance Club 4; Homecoming Attendant 4; Class Secretary 2, 4; Broncho 1, 2; G.A.A. 1, 2; Travel Club 3; French Club 4, Vice-President; Hall Monitor 2; Freshman Speech Club; "Kind Lady," "Connecticut Yankee in King Arthur's Court," "Cinderella," "Jack and the Beanstalk," Masque & Wig 2, 3, 4; National Thespian Society 3, 4; A Cappella 2, 3, 4; Girls Glee Club 2; Latin Club 1; Typing Club 1.

## CORYNNE PAULSON

R.T.D.C. & D.S. 3, 4; Square Dance Club 2; Pep Club 1; Class Treasurer 4; Masque and Wig 2, 3, 4; National Thespian Society 2, 3, 4; A Cappella 2, 3, 4; Girls Ensemble 3, 4; Typing Club 1; "Cinderella".



# Seniors

**KARL BICK**

Square Dance Club 1, 2, 3, Exhibition Team 2, 3; Football 1, 2; Latin Club 1; Natural History Club 1.

**DALE BIERKNESS**

Square Dance Club 1; Industrial Education 1, 4; Boys Glee Club 1, 3; Camera Club 2; Typing Club 1.

**BETTY BLAYDES**

National Honor Society 3, 4; Square Dance Club 2, 3; Cheer Leader 4; G.A.A. 1, 2, 3, 4, Secretary 3, President 4; Masque & Wig 4; Make-Up Club 3; Natural History Club 4.

**JAMES BRIGGS**

Trans. Cantonville High School, Cantonville, Maryland 2; Student Council 4, Treasurer; National Honor Society 3, 4; Square Dance Club 3, Exhibition Team 3, 4; "B" Club 3, 4, President 4, Vice-President 3; Football 3, 4; Basketball 2; Baseball 2, 3, 4; Class Vice-President 3; French Club 3; Creative Writing 3; "Kind Lady," "Connecticut Yankee in King Arthur's Court," Masque & Wig 3; Boys Glee Club 2; Chess and Checkers Club 4, President; Honor Council 4; President.



**RICHARD BRUSIO**

Square Dance Club 1; "B" Club 4; Tennis 3, 4; Baseball 1; Travel Club 4; Projectionist 1, 2, 3, 4; Boys Glee Club 3; Camera Club 2; Typing 1.

**DORIS BUTZ**

Trans. Palatine High School 2; Square Dance Club 2; F.H.A. 4; Jr. Red Cross 3; Make-Up Club 2; Camera Club 2.

**LEILA CAMPBELL**

Square Dance Club 1, 2; G.A.A. 1, 2; Freshman Speech Club 1; 3, 4; Typing Club 1; Twirler 1.

**BRIAN CAREY**

Trans. Palatine High School 2; Square Dance Club 2, 3; Pep Club 2; Stage Crew Club 4.

# Seniors

**JANET SUE CHILES**

Square Dance Club 1, 2, 3; Pep Club 1; G.A.A. 1, 2, 3, 4; Modern Dance 4; Tumbling 2, 4; Make-Up Club 2, 3; Band 1; Twirler 1.

**TONETTE CHRISTENSEN**

Trans. Kemper Hall, Kenosha, Wisconsin, 3; Modern Dance 3; Girls Glee Club 3, 4.

**WILLIAM COCHRAN**

Square Dance Club 1, 2; "B" Club 3, 4; Football 1, 2, 3, 4; Track 1; Basketball 1, 2; Hall Monitor 2; Creative Writing 1; A Cappella 3, 4; Boys Glee Club 1, 2; Typing Club 1.

**TYLA COCHRAN**

Square Dance Club 1, 2, 3, 4; Exhibition Team 3, 4; Pep Club 1, 2; Cheer Leader 2; G.A.A. 1, 2, 3; Mixed Chorus 2; Make-Up Club 2, 3; A Cappella 3, 4; Spanish Club 1.

**PATRICIA COLE**

Square Dance Club 1, 2, 3, 4, Treasurer 3, Exhibition Team 2, 3, 4; Cheer Leader 2, 3, 4; G.A.A. 1, 2; Freshman Speech Club; "Kind Lady," "Connecticut Yankee in King Arthur's Court," Masque & Wig 2, 3, 4; National Thespian Society 3, 4; A Cappella 2, 4; Natural History Club 4; Typing Club 1; Twirler 1.

**ROLAND DECHERT**

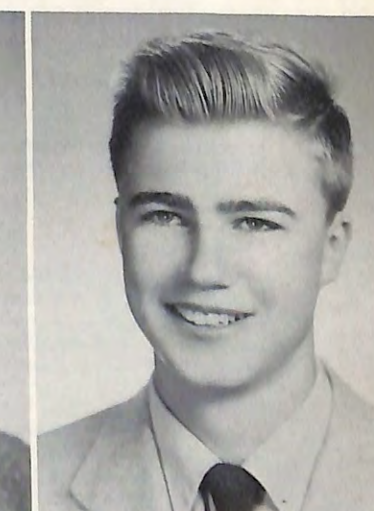
Square Dance Club 1; Orchestra 1, 2, 3; Latin Club 1, 2; Natural History Club 2, 4; Typing Club 1.

**MARTHA DIETER**

Square Dance Club 1, 2; F.H.A. 1, 2, 3, 4; Pep Club 1; G.A.A. 1, 2, 3, 4; Projectionist 1, 2; Hall Monitor 2, 3; A Cappella 2, 3, 4; Girls Glee Club 2, 3; Typing Club 1.

**BRUCE DOCKERY**

Trans. Southern Arizona School for Boys, Tucson, Arizona, 4; B.H.S. Student 1, 2, 4; Corral 1, 2; Square Dance Club 1; Football 1, 2, Manager 2; Basketball 1, 4; Baseball 4; Pep Club 1; Spanish Club 1; Camera Club 1, 2; Natural History Club 1, 2; Chess & Checkers Club 4.







# Seniors

**BRIAN DONLEA**  
Square Dance Club 1; Football 1, 2; Stage Crew Club 2; Latin Club 1, 2; Natural History Club 2, 3; Typing Club 1.

**PATTE DORAN**  
R.T.D.C. & D.S. 4; Square Dance Club 1; Broncho 1, 2, 3; G.A.A. 2, 3; Creative Writing 1, 2, 3; "Cinderella"; Masque & Wig 2, 3, 4; National Thespian Society 2, 3, 4; Make-Up Club 1, 2, 3; Typing Club 1; Twirler 1.

**DONNA EASTERLY**  
Square Dance Club 1, 2, 3; Pep Club 1; G.A.A. 1, 2, 3; Hall Monitor 4; Freshman Speech Club; Mixed Chorus 2; Make-Up Club 1, 2, 3, 4; Spanish Club 2; Natural History Club 4; Typing Club 1; Twirler 1.

**TOM FOLLETH**  
Square Dance Club 1; "B" Club 3, 4; Basketball 1, 2, 3, 4; Pep Club 1; Creative Writing 1, 2; Freshman Speech Club 1; Boys Glee Club 2, 3; Spanish Club 2; General Ag 1.

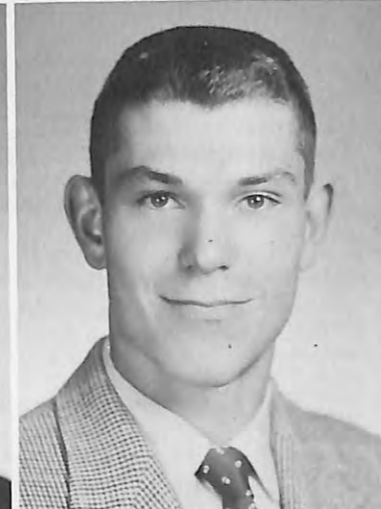


**MARY FRY**  
F.H.A. 2, 3, 4; Pep Club 1; G.A.A. 2, 3, 4; Mixed Chorus 2; A Cappella 3; Girls Glee Club 3; Natural History Club 3; Twirler 2.

**PATRICIA GALVIN**  
F.H.A. 1, 2, 3; Pep Club 1, 2; G.A.A. 1, 2, 3; Jr. Red Cross 4; A Cappella 2, 3, 4; Girls Glee Club 1, 2, 3, 4; Girls Ensemble 3, 4; Typing 1.

**ROBERT GARDNER**  
R.T.D.C. & D.S. 4; Student Council 4; Square Dance Club 1, 2; Travel Club 3, 4; Hall Monitor 3; Industrial Arts Club 4; "Kind Lady," Masque & Wig 4; Natural History Club 2, 3.

**ROGER GARITE**  
Square Dance Club 1; Travel Club 3; Industrial Arts Club 4; Natural History Club 3.



**BETTY HEGNER**  
Square Dance Club 1; Pep Club 1; G.A.A. 1; Hall Monitor 2; Make-Up Club 2; A Cappella 2, 3; Girls Glee Club 2.

**RONALD HEIDKE**  
Student Council 3; National Honor Society 4; Square Dance Club 1, 2, 3, 4, President 4; Exhibition Team 2, 3, 4; "B" Club 3, 4; Football 1, 2, 3, 4; Track 2; Creative Writing 1, 2, 3; "Kind Lady," "Connecticut Yankee in King Arthur's Court," Masque & Wig 3, 4; National Thespian Society 4; Spanish Club 1; Natural History Club 2; Typing Club 1.

**HARVEY HEINEBERG**  
Trans. Glenbard High School, Glen Ellyn, Illinois, 2; Square Dance Club 2; F.F.A. 2, 3, 4, Vice-President 3.

**NONA HONEMANN**  
Square Dance Club 1, 2; F.H.A. 1, 2, 3, 4; G.A.A. 1, 2, 3, 4; Girls Glee Club 1.

# Seniors

**WENDY GIBBONS**  
Square Dance Club 1, 2, 3; Broncho 3, 4; G.A.A. 1; Modern Dance 4; Freshman Speech Club; Masque & Wig 2, 4; A Cappella 4; Natural History Club 4.

**PHILIP GRINSTEAD**  
Square Dance 1; Football 1, 2; Baseball 1, 2, 3; Broncho 3; Travel Club 3; Hall Monitor 4; Freshman Speech Club 1; "Kind Lady"; Boys Glee Club 4; Latin Club 3, 4, Secretary 3; Natural History Club 2, 3, 4.

**HELEN HANSEN**  
F.H.A. 1, 2, 3; Pep Club 1; Broncho 4; G.A.A. 2, 3, 4; Travel Club 3; A Cappella 3, 4; Girls Glee Club 1, 2, 3, 4; Natural History Club 2; Librarian 2; Typing Club 1.

**ASTRID HARTLEY**  
Square Dance Club 2; Pep Club 1, 2; Broncho 2; G.A.A. 1, 2, 3, 4, Vice-President 4; Hall Monitor 3; A Cappella 2, 3, 4; Girls Glee Club 1, 2, 3; Girls Ensemble 3, 4; Natural History Club 1.



# Seniors

IRENE HOUTZ

Trans. West Chester High School, Penn. 4; R.T.D.C. & D.C. 4; "Kind Lady", A Cappella 4; Girls Ensemble 4; Dance Band 4; Spanish Club 4.

RICHARD ISETT

Trans. Hinsdale High School 2; Square Dance Club 2, 3, 4; "B" Club 2, 3, 4; Football 2, 3, 4; Track 2, 3, 4; Class Vice-President 2; Spanish Club 2; General Ag Club 2.

WAYNE JAHN

F.F.A. 1, 2, 3, 4, Reporter 3.

KAY KAMPERT

F.H.A. 4; Pep Club 1; G.A.A. 2, 3; Make-Up Club 2; Girls Glee Club 1, 2; Natural History Club 4; Librarian 1; Typing Club 1.



CHARLES KEE

Football 1, 2, 3; Track 1; Basketball 1; Baseball 2; Freshman Speech Club; Mixed Chorus 2; A Cappella 3, 4; Boys Glee Club 3; Natural History Club 1; Chess & Checkers Club 4.

JUDITH KENSEL

Student Council 4; National Honor Society 2, 3, 4; Square Dance Club 2, 3, 4; Class Treasurer 3; G.A.A. 2; Freshman Speech Club 1; Masque & Wig 2, 3, 4, Vice-President 3; National Thespian Society 2, 3, 4; Make-Up Club 2, 3, 4, President 4, Vice-President 3; A Cappella 2, 3; Girls Ensemble 2, 3, 4; Typing Club 1; Honor Council 4; D.A.R. Award 4.

JULIE KENYON

Pep Club 1; Cheer Leader 1; G.A.A. 1, 2; French Club 3, 4, Secretary 3, Treasurer 4; "Kind Lady", Make-Up Club 1, 2; A Cappella 1, 3, 4; Girls Glee Club 4; Girls Ensemble 3, 4; Typing Club 1.

RUTH MARY KERIN

F.H.A. 1, 2, 3, 4, President 4; G.A.A. 2, 3; String Ensemble 1, 2; Girls Glee Club 3; Orchestra 1, 2, 3; Natural History Club 3, 4; Typing Club 1.



# Seniors

HERMAN KRUNFUS

Baseball 2; Projectionist 1; A Cappella 4; Boys Glee Club 3; Camera Club 2.

KAY KUHLMAN

R.T.D.C. & D.S. 3, 4; Student Council 2; Square Dance Club 2; Pep Club 1, 2; Broncho 4; G.A.A. 1, 2; Travel Club 3; Freshman Speech Club; Make-Up Club 1, 2, 3; A Cappella 1, 4; Girls Ensemble 2; Spanish Club 1, 2, President 2; Typing Club 1.

THOMAS LANGOS

"B" Club 4; Football 3, 4, Manager; Basketball 3, 4, Manager; Baseball 3, 4, Manager; Hall Monitor 1; Natural History Club 1, 2.

NAOMI LAWRENCE

Square Dance Club 1, 2; Broncho 4; Jr. Red Cross 1, Secretary; Girls Glee Club 1, 2, 3, 4; Librarian 1.



BUDD LEMKE

Trans. Palatine High School 2; Square Dance Club 4; Projectionist 2, 3, 4; Radio Council 2, 3; Stage Crew Club 2, 3.

MARILYN MAREK

Trans. Palatine High School 2; R.T.D.C. & D.S. 4; Modern Dance 3; F.T.A. 4; Jr. Red Cross 3; Girls Glee Club 2, 3, 4; Band 2, 3, 4; Orchestra 2, 3, 4; Camera Club 2.

PAUL MARTIN

R.T.D.C. & D.S. 2, 3, 4; Student Council 3; National Honor Society 3, 4; Square Dance Club 1; Track 1; Baseball 1, 2; Travel Club 4; Creative Writing 2; Spanish Club 1; Typing Club 1; Student Inventory Committee 3, 4.

DAVE MATTESON

Trans. Baldwin High School 2; "B" Club 3, 4; Football 2, 3, 4; Track 2; Baseball 2, 3, 4.



# Seniors

**MARY McCARTHY**  
Square Dance Club 1, 2; G.A.A. 1, 2; F.T.A. 4 Vice-President; Hall Monitor 3, 4; Masque & Wig 2; Make-Up Club 1, 2; Spanish Club 1, 2; Student Inventory Committee 3, 4.

**KATHERINE McKAIN**  
Square Dance Club 1, 2, 3; F.H.A. 1, 2; G.A.A. 1, 2; F.T.A. 4; Freshman Speech Club 1; "Connecticut Yankee in King Arthur's Court," "Jack and the Beanstalk," Masque & Wig 2, 3, 4; National Thespian Society 2, 3, 4; Make-Up Club 3, 4; Latin Club 1, 2; Typing Club 1.

**NANCY MEEHAN**  
R.T.D.C. & D.S. 3, 4; Student Council 3, Secretary; National Honor Society 2, 3, 4, Secretary 4; Girls State 3; Homecoming Queen 4; Class Secretary 3; Class Treasurer 2; Broncho 1, 2; G.A.A. 1, 2; Tumbling 4; "Kind Lady," "Connecticut Yankee in King Arthur's Court," Masque & Wig 2, 3, 4; National Thespian Society 3, 4; Make-Up Club 1; A Cappella 2, 3; Honor Council 4, Vice-President.

**GLADYS MEIER**  
F.H.A. 1, 2, 3; Pep Club 1; Broncho 4; G.A.A. 2, 3, 4; Hall Monitor 4; Creative Writing 1; Girls Glee Club 4; Librarian 1; Typing Club 1.



**MARTHA MEYER**  
F.H.A. 1; G.A.A. 1, 2; F.T.A. 3, 4; Make-Up Club 2, 4; Girls Glee Club 3, 4; Spanish Club 2; Natural History Club 2, 3; Typing Club 1; Chess Club 4.

**ALBERT MILLER**  
Square Dance Club 1; Industrial Education 1, 2; Radio Council 1; A Cappella 1, 2, 3; Boys Glee Club 1, 2, 3.

**DELORES MILLER**  
Square Dance Club 1, 2; F.H.A. 1, 2; Pep Club 1, 2; G.A.A. 2; Jr. Red Cross 3; A Cappella 4; Girls Glee Club 3, 4; Typing Club 1.

**GENEVA MOTTER**  
R.T.D.C. & D.S. 4; Pep Club 1; French Club 3; Jr. Red Cross 2, 3, 4, President 2, 3; Mixed Chorus 2; Girls Glee Club 4; Camera Club 3, Secretary; Typing Club.



**VIRGINIA NORGREN**  
F.H.A. 4; G.A.A. 3, 4; Hall Monitor 3; Jr. Red Cross 1, 2; Secretary 2; Girls Glee Club 1, 2; Band 1; Orchestra 1, 2; Natural History Club 2, 3, 4.

**CRAIG OBERST**  
"B" Club 3, 4; Track 2, 4; Basketball 1, 2, 3, 4.

**JOAN ORZECH**  
Square Dance Club 1; F.H.A. 2; Pep Club 1; Jr. Red Cross 2; Girls Glee Club 4; Librarian 1.

**JACQUELYN OTTOSON**  
Square Dance Club 1; F.H.A. 1, 2, 3; Pep Club 1; Jr. Red Cross 3, 4, Secretary 3; Girls Glee Club 1; Typing 1.



**ROBERT NICKELS**  
Baseball 1, 2; Boys Glee Club 1, 2.

**DENNIS NORBECK**  
Football 1, 4; Basketball 1, 2; Travel Club 3; Freshman Speech Club 1; Boys Glee Club 1, 2, 3; Spanish Club 1; Natural History Club 1, 2, 3; Typing Club 1.

**MARIANNE NESLER**  
Trans. Palatine High School 2; National Honor Society 3, 4; Broncho 4; F.T.A. 2, 3, 4, President 4; Hall Monitor 4; Masque & Wig 4; Girls Glee Club 2, 3; Latin Club 2; Natural History Club 4.

**LIVINGSTON NEWBERG**  
R.T.D.C. & D.S. 2, 3; Square Dance Club 1, 2, 3; "B" Club 3, 4; Football 1, 2, 3, 4; Track 1, 2; Basketball 2, 3; Baseball 2, 3; Travel Club 3; Projectionists 3; Creative Writing 1, 2; Typing Club 1.



# Seniors

**JOANNE PETERS**

R.T.D.C. & D.S. 3; Square Dance Club 1, 2; Pep Club 1; G.A.A. 2; Travel Club 3; Projectionists 3; Freshman Speech Club 1; Masque & Wig 2, 3, 4; Nat'l Thespian Society 3, 4; Make-up Club 2, 3, 4; A Cappella 1, 3, 4; Girls Glee Club 2; Girls Ensemble 4; Typing Club 1.

**JACQUELINE POTTER**

Trans. Niles Township High School 4; Broncho 4; Masque & Wig 4; Girls Glee Club 4.

**WAYNE PREMO**

"B" Club 3, 4; Basketball 1, 2, 3, 4; Baseball 2; Pep Club 1; Natural History Club 1, 3, 4; Stamp Club 4.

**MERRIE PRESS**

Trans. Maine Township 4; Square Dance Club 4; Homecoming Attendant 4; Make-up Club 4.



**MYRNA RICE**

F.H.A. 1, 2, 3; G.A.A. 2, 3; Freshman Speech Club 1; Mixed Chorus 2; A Cappella 1, 3, 4; Girls Glee Club 1, 2; Typing Club 1.

**WILLIAM RIEKE**

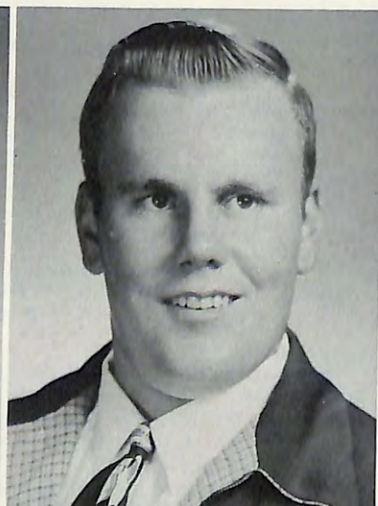
F.F.A. 1, 2, 3, 4, Vice President.

**JOAN ROBINSON**

National Honor Society 4; Square Dance Club 1; Broncho 2, 3, 4, Editor 4; G.A.A. 1, 2; Freshman Speech Club 1, "Connecticut Yankee in King Arthur's Court"; "Jack and the Beanstalk"; Masque & Wig 2, 3, 4, President 4; Nat'l Thespian Society 2, 3, 4; Make-up Club 2, 3; A Cappella 1, 2, 4; Girls Glee Club 1, 2, 3; Girls Ensemble 2, 3, 4; Camera Club 3, Secretary-Treasurer 3; Typing Club 1.

**EILEEN SABO**

Trans. Palatine High 2; Square Dance Club 2; F.H.A. 2; Broncho 4; G.A.A. 2, 3, 4; Modern Dance 3; Hall Monitors 4; Tumbling 2; Girls Glee Club 1, 2.



**FRED SCHRAMM**

Square Dance Club 1; "B" Club 3, 4; Football 1, 2, 3, 4; Track 2, 3, 4; Baseball 1, 4; Projectionists 1; Industrial Education 4; Boys Glee Club 3; Spanish Club 2; Camera Club 1; Typing Club 1; Radio Club 2.

**SHERMAN SCHUBBE**

Trans. Palatine High 2; Square Dance Club 2, 3; Track 1, 2, 3, 4; F.F.A. 2, 3, 4; Vice President 4; Secretary 3.

**JANET SCHUMACHER**

F.H.A. 1, 2, 3, 4; Parliamentarian 3; Treasurer 4; G.A.A. 1, 2, 3, 4; A Cappella 2, 3; Girls Glee Club 1, 2, 3; Natural History Club 3, 4; Typing Club 1; Pep Club 1.

**RICHARD SCHWEMM**

Corral 1; R.T.D.C. & D.S. 3, 4; National Honor Society 3, 4; President 4; "B" Club 3, 4; Basketball 1, 2, 3, 4; Tennis 3, 4; Baseball 1, 2; Broncho 2, 3; Travel Club 3, 4; Projectionists 1, 2, 3; Creative Writing 2, 3; "Connecticut Yankee in King Arthur's Court"; Masque & Wig 3, 4; Radio Council 2; Latin Club 1, 2, 3; Camera Club 1, 2; Cross Country 1, 4.

# Seniors

**CAROL GENE SCHLEIFER**

Trans. Maine Township 3; Square Dance Club 3; Masque & Wig 3, 4, Secretary 4; Nat'l Thespian Society 3, 4; Make-up Club 3, 4; Stage Crew Club 3, 4; A Cappella 3, 4.

**DIANE SCHLIE**

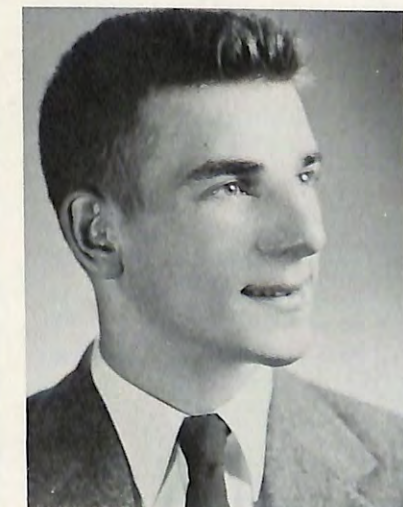
Square Dance Club 1, 2, 3, 4; F.H.A. 2; Cheerleader 3, 4; Broncho 4; G.A.A. 1, 2, 3, 4; "Kind Lady"; A Cappella 2, 3, 4; Girls Glee Club 1, 2; Natural History Club 4; Typing Club 3.

**ERVIN SCHMID**

F.F.A. 1, 2, 3, 4, Treasurer.

**DONNA SCHMITT**

Square Dance Club 1, 2, 3, 4; Exhibition Team 2, 3, 4; Pep Club 1; G.A.A. 1, 2; Freshman Speech Club 1; Masque & Wig 2, 3, 4; Nat'l Thespian Society 3, 4; Make-up Club 2, 3, 4; Spanish Club 1; Natural History Club 3, 4; Typing Club 1.





# Seniors

**BETTE SHEPHERD**  
Student Council 4; F.H.H. 1, 2; Secretary-Treasurer 1; Cheer leader 2; Broncho 4; G.A.A. 1, 2, 3, 4; Modern Dance 3, 4; String Ensemble 1, 2; Freshman Speech Club 1, Secretary-Treasurer 1; Mixed Chorus 2; A Cappella 1, 2, 3, 4; Girls Glee Club 1, 2, 4; Girls Ensemble 4; Orchestra 1, 2; Latin Club 1, 2; Typing Club 1.

**ROBIN SITTING**  
Student Council 4, Secretary; Square Dance Club 1, 2, 3, 4, Exhibition Team 3, 4; G.A.A. 1; French Club 3, Vice-President; Hall Monitor 2; Masque & Wig 3, 4; Make-Up Club 1, 2, 3; A Cappella 2, 3, 4; Natural History Club 4.

**VERNA GAYLE SODERBERG**  
Student Council 3; Square Dance Club 1, 2, 3, 4, Secretary 4; Exhibition Team 2, 3, 4; Pep Club 1, 2; Cheer leader 1, 2, 3, 4; G.A.A. 1, 2; Mixed Chorus 2; Masque & Wig 2, 3, 4; A Cappella 1, 2, 3, 4; Girls Glee Club 1; Latin Club 1.

**CINDER SOMERVILLE**  
Trans. Kemper Hall 3; Corral 3, 4, Editor 4; R.T.D.C. & D.S. 3, 4; Projectionists 3; A Capella 3, 4; Girls Ensemble 4; Spanish Club 4, Secretary 4; Camera Club 3.

**FRANCES STANKE**  
Trans. Palatine High 2; F.H.A. 2, 3, Secretary; Jr. Red Cross 2, 3; Girls Glee Club 2, 3.

**GERTRUDE STANKE**  
Trans. Palatine High 2; F.H.A. 1, 2, President, Vice President; Jr. Red Cross 2; Mixed Chorus 2; Girls Glee Club 1, 2.

**CARYL STEWARD**  
Square Dance Club 1, 4; F.H.A. 1, 2, 3, President 3; Travel Club 3; Hall Monitors 3; Jr. Red Cross 1, 2; Typing Club 1.

**DON SUCHY**  
Student Council 4; "B" Club 3, 4; Football 1, 2, 4; Basketball 1; Baseball 1, 2, 3, 4; Hall Monitor 4; Creative Writing 1; Boys Glee Club 1; Natural History Club 1, 2, 3, 4; Typing Club 1; F.F.A. 1, 2, 3, 4, Treasurer 3; Reporter 2.



# Seniors

**BETTY SWANSON**  
Trans. Ontonagon, Michigan 2; Broncho 4; G.A.A. 2, 3; Girls Glee Club 2, 3, 4.

**SUE SWEDENBORG**  
Trans. Maine Township 4; Broncho 4; A Cappella 4; Girls Glee Club 4.

**RICHARD THRELKELD**  
National Honor Society 4; Square Dance Club 1, 2, 3, 4; Exhibition Team 3, 4; "B" Club 3, 4, Secretary-Treasurer; Football 1, 3, 4; Broncho 1, 2, 3, 4; Projectionists 2, 3; Creative Writing 1, 2; Stardusters 3, 4; Radio Council 4; Boys Glee Club 3; Band 1, 2, 3, 4; Pep Band 1, 2, 3, 4; Orchestra 1, 2, 4; Spanish Club 1, 2; Typing Club 1.

**CRAIG TIFFANY**  
Transfer Rosemead High School, Rosemead, California, 3; Camera Club 3.



**WAYNE TIMM**  
R.T.D.C. & D.S. 3, 4; "B" Club 3, 4; Football 1, 2, 3, 4; Track 3; Golf 1, 2, 3, 4; Hall Monitors 4; Creative Writing 1, 2; Stardusters 4; Boys Glee Club 3; Band 1, 2, 3, 4; Dance Band 4; Pep Band 1, 2, 3, 4; Spanish Club 1, 2; Natural History Club 3; Typing Club 1.

**JUDITH TOYCCEN**  
Trans. Waller High 1; R.T.D.C. & D.S. 3, 4; Broncho 2, 3; G.A.A. 3; Projectionists 2, 3, 4; "Connecticut Yankee in King Arthur's Court"; Masque & Wig 2, 3, 4; Nat'l Thespian 3, 4; Radio Council 2; Make-up 2, 3, 4, Vice President 4; A Cappella 3, 4; Girls Ensemble 3, 4; Librarian 2.

**KAREN TWERDAHL**  
Trans. 3; R.T.D.C. & D.S. 4; G.A.A. 4; A Cappella 3, 4; Spanish Club 3, 4.

**CONNIE VODNANSKY**  
Square Dance Club 2; F.H.A. 2; G.A.A. 2, 3; Projectionists 2, 3, 4; Hall Monitors 3; String Ensemble 1, 2; Freshman Speech Club 1; Make-up Club 3, 4; A Cappella 3, 4; Girls Glee Club 1, 2; Girls Ensemble 2, 3, 4; Orchestra 1, 2, 3; Typing Club 1; Twirlers 2.

# Seniors

**KAY WALLIS**  
 Square Dance Club 2, 3; Broncho 3, 4; G.A.A. 3, 4; Secretary 4;  
 Modern Dance 3; Tumbling 2; A Cappella 3, 4; Girls Glee Club 2,  
 4; Camera Club 2; Librarian 2; Twirlers 3, 4.

**EDITH WEGNER**  
 F.H.A. 1; Travel Club 3; Hall Monitors 4; Creative Writing 3;  
 Freshman Speech Club 1; "Kind Lady"; Masque & Wig 2, 3, 4; Nat'l  
 Thespian Society 4; Make-up Club 2, 4; Spanish Club 1; Natural  
 History Club 2, 4; Typing Club 1.

**ALICE WEIHER**  
 Trans. Palatine High 2; Broncho 4; G.A.A. 2; Girls Glee Club  
 2, 3, 4.

**DUDLEY WELCH**  
 "B" Club 3; Football 1, 2, 3, 4; Basketball 1; Baseball 1, 2, 3, 4;  
 Class Treasurer 1; Projectionist 1, 2, 3, 4; Hall Monitor 2; Creative  
 Writing 1; Freshman Speech Club; Boys Glee Club 3; Spanish Club  
 1, 2; Typing Club 1; General Ag 1.



# Seniors

**PAUL YOUNGER**  
 R.T.D.S. & D.S. 4; Student Council 1, 2, 3, 4; President 4; National  
 Honor Society 3, 4; Square Dance Club 1, 2, 3, 4; Treasurer 2;  
 Exhibition Team 2, 3, 4; "B" Club 3, 4; Football 1, 2, 3, 4; Class  
 President 2; Creative Writing 1, 2; "Kind Lady," "Connecticut Yankee  
 in King Arthur's Court," Masque & Wig 3, 4; National Thespian Society  
 4; Spanish Club 1; Natural History Club 2; Typing Club 1.



**ROGER WESSEL**  
 "B" Club 3, 4; Football 2, 3; Basketball 1, 2, 3; Baseball 1, 2, 3;  
 Broncho 1; A Cappella 1, 2, 3, 4; Boys Glee Club 1, 2; Radio Council 2.

**MICHAEL WILKES**

**WILLIAM WOODRUFF**  
 R.T.D.C. & D.S. 3; Square Dance Club 1; Travel Club 3, 4; Natural  
 History Club 2.

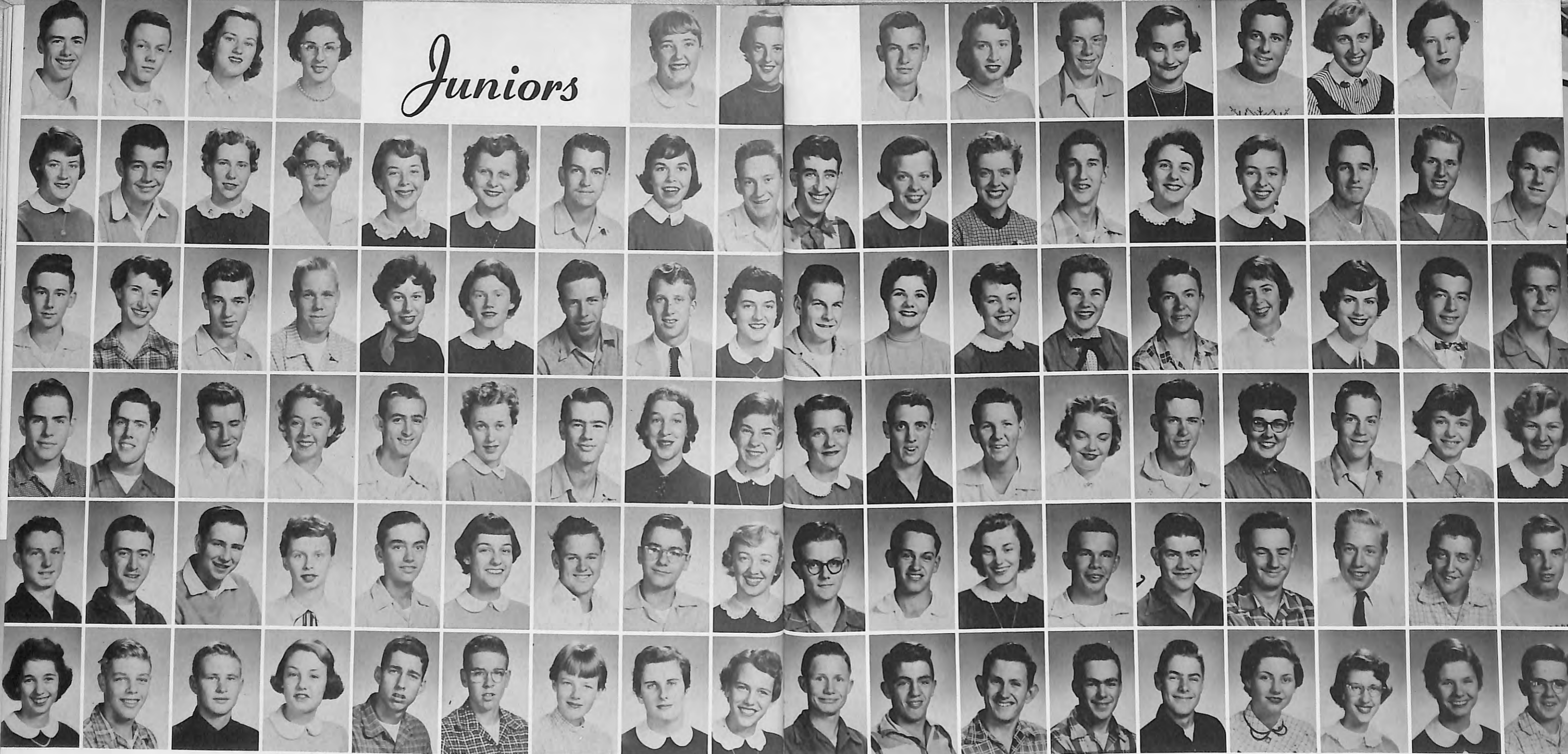
**KENNETH YAEGAR**  
 Trans. Elgin 2, B.H.S. Student 1, 3, 4; Square Dance Club 3; "B"  
 Club 3, 4; Football 1, 3, 4; Track 3, 4; Basketball 1, 4; Class Secretary  
 1; French Club 3, 4; Creative Writing 1; Freshman Speech Club 1;  
 A Cappella 3, 4; Boys Glee Club 3; General Ag Club 1; Boys State 3.



1. American Legion essay contest winners.
2. How many announcements do you want?
3. Self-explanatory.



# Juniors



F. Hummel  
President  
P. Barton  
C. Brouk  
W. Dow  
K. Griffin  
C. Jahnke

W. Schmitz  
Vice-President  
D. Beardon  
S. Buschek  
A. Eslick  
J. Hansing  
R. Jensen

G. Gardner  
Secretary  
M. Beckhart  
C. Caldwell  
W. Evans  
R. Hartwig  
K. Johansen

C. LeBoy  
Treasurer  
J. Benson  
P. Catlow  
P. Ferris  
S. Harvey  
E. Johnson

J. Bierman  
J. Chambers  
D. Franks  
R. Heine  
R. Jurs

J. Bonkoski  
N. Colburn  
P. Gates  
M. Hendee  
D. Kaufman

D. Bohatka  
R. Colombo  
R. Goldman  
C. Hendricks  
J. Keeleric

P. Braddock  
J. Condill  
J. Gould  
S. Hoffman  
S. Kincaid

K. Brooks  
D. Doolen  
M. Gould  
G. Jahn  
A. Koci

D. Anderson  
S. Arnold

J. McCann  
W. Miller  
B. Paulsen  
K. Scheer  
R. Stebbins

R. Krabbe  
H. McIntosh  
M. Naylor  
R. Peck  
H. Schmid  
D. Thompson

E. Krause  
H. Marshall  
A. Neuman  
G. Pohlman  
A. Schroeder  
A. Vann

R. Krog  
C. Mee  
C. Newhall  
S. Prochaska  
C. Seiling  
G. Vickers

D. Kronenberger  
B. Meier  
H. Nickelson  
R. Reinke  
P. Sharpe  
L. Volling

R. Lichthardt  
H. Merkle  
A. Noble  
B. Richter  
R. Simmons  
S. Vorbeck

D. Lunquist  
G. Merritt  
D. Oberlin  
P. Rydland  
P. Sitz  
M. Wares

G. Lynn  
R. Meyer  
T. Ogden  
S. Scbo  
R. Smith  
A. Willem

R. Miller  
H. Palmer  
C. Schaefer  
R. Staton  
W. Withycombe



Row 4 — P. Bunta, J. Aspinwall, D. Carr, D. Brandt, C. Anderson, L. Biesterfeld K. Biek, J. Bowers. Row 3 — P. Corbett, C. Alger, J. Beeken, R. Brown, D. Craig, K. Fredin, W. Bielke, E. Foerster. Row 2 — A. Buffalo, C. Bentsen, D. Bock, A. Comes, C. Blackshaw. Row 1 — L. Blais, M. Benson, C. Cagney, S. Bjornberg, B. Cooney, P. Caul, J. Buckingham.

# Sophomores

Row 4 — R. Hansen, D. Grinstead, M. Lipofsky, R. Kashinski, R. Hecht, L. Hembrey, T. Hargrave, N. Magnuson, E. Maha. Row 3 — D. Meister, D. Kelsey, J. Johnson, W. Hardt, J. Fry, J. Marek, E. Heinemann. Row 2 — Mr. Johnson, L. Lewellen, S. Grigsby, D. Kelsey, L. Kerry, Miss McBride. Row 1 — S. Heiden, R. Jahn, M. Green, D. Knight, L. Kelly, P. Martin, R. Mess.



Row 4 — M. Romanski, H. Shatwell, T. Paul, R. Porter, D. Cummings, M. Novy, D. Moebius, J. Mitana. Row 3 — R. Peters, D. Meyer, R. Schoettler, G. Riley, F. Peck, H. Michael, W. Press. Row 2 — J. Orzech, A. Sabo, D. Meyer, J. Oswald, J. Miller, S. Sibley, P. Roth, Miss Stevens. Row 1 — G. Schunk, K. O'Dette, S. Sarius, S. Richardson, K. Peterson, E. Rieke, S. Rice.

# Sophomores

Row 4 — M. Williams, C. Uric, D. Timm, N. Twerdahl, R. White, L. Witt, B. Watson. Row 3 — C. Thomas, B. Stanek, W. Thies, P. Simmons, B. Weese, A. Staton. Row 2 — J. Toppe, R. Willard. Row 1 — V. Smith, N. Winn, J. Vaughan, S. Sommers, R. Wendt, L. Sullivan.







Row 4 — F. Chambers, G. Cox, L. Devereau, R. Denson, C. Berg, W. Bohotka, M. Banks, D. Chamberin, R. Evans, M. Andrae. Row 3 — R. Finkstaedt, B. Bruckmah, W. Dawson, S. Cole, N. Catlow, C. Fifer, M. Barker, C. Buck. Row 2 — R. Buffalo, W. Cagney, R. Buschek, R. Dobrich, R. Foster, M. Banks, R. Dobrich. Row 1 — L. Fullman, C. Fisher, A. Allerton, M. Fisher, C. Berg, L. Brink, B. Belnap, B. Anderson.

# Freshmen

Row 4 — W. Hile, W. Hood, J. Frey, D. Hannah, S. Lewis, N. Isom, H. Honemann, J. Hagedorn, L. Grischow, W. Koci. Row 3 — J. Franks, S. Harkness, P. Lageschulte, K. Hansen, M. Krabbe, G. Johnson, J. Horn, K. Harkin. Row 2 — R. Haberly, G. Griffin, R. Lindberg, S. Johnson, V. Grace, J. Kennedy, A. Gayer, C. Behrens, T. Hunter. Row 1 — M. Grzczka, B. Lemke, D. Derry, N. Hardacre, D. Kiaja, J. Hecht, D. Grzczka, D. Johnson.



Row 4 — P. Nichols, D. Miller, T. Mitchell, J. Richardson, R. Malmgren, D. Nixon, P. Marquardt, W. Olesen, R. Robinson. Row 3 — R. Prestidge, P. Miller, J. Rieke, J. Norbeck, E. Merritt, J. McCarthy, R. Price. Row 2 — A. Meyer, J. McKelvey, S. Pettise, C. Potter, J. Mangum. Row 1 — S. Lowry, M. Peterson, G. Mayers, M. Meehan, B. Rieke, J. Nightingale, L. Muhlhausen, J. Miller.

# Freshmen

Row 4 — F. Rollo, D. Younger, H. Schubbe, J. Treat, D. Sturtevant, P. Sherrer, A. Stramel, W. Steward, B. Seiling, B. Wagner, J. Pohlman, J. Troxel, G. Nickelson. Row 3 — K. Seversen, P. Keisler, M. Van Horn, C. Totman, W. Thorpe, T. Sullivan, A. Stresen-Reuter, W. Shepherd, D. Stroh, A. Doyle, P. Saindon, W. Thies. Row 2 — M. Miller, M. Roesslein, V. Sitz, K. Walker, S. Seher, B. Van Diver, P. Stiglich, S. Smith, C. Wilcox, J. Vance, W. Sumner, E. Thompson. Row 1 — B. Williams, B. Fisher, S. Schmitz, J. Tiesling, J. Lyon, B. Mansfield, S. Talmey, I. Thomasson, J. Miller, C. Walbaum.





Row 3 — P. Haffner, P. Sitz, Mr. Johnson, C. Schleifer, J. Robinson. Row 2 — M. Walbaum, J. Peters, N. Meehan, D. Schmitt. Row 1 — K. McKain, J. Kensel, C. Paulson, J. Toycen.

### National Thespians



Row 3 — G. Motter, V. Grace, J. Bonkoski, J. Gould, C. Schaefer, Mrs. Baker. Row 2 — P. Doran, B. Meyer, E. Krause. Row 1 — J. Ottoson, S. Kincaid, G. Lynn, S. Vorbeck, P. Galvin.

### Junior Red Cross

### Stage Crew

Row 4 — R. Colombo, F. Chambers, P. Catlow, L. Biesterfeld, R. Krabbe, P. Haffner. Row 3 — J. Hansing, W. Koci, J. Horn, J. Mitana, J. Toppe, L. Sullivan. Row 2 — A. Noble, S. Richardson, A. Comes, A. Staton, C. Schleifer. Row 1 — D. Bohatka, P. Ferris, P. Sitz, Mr. Johnson, K. Kuhlman.

Row 4 — M. Romanski, J. Bowers, E. Keller, R. Simmons, R. Heck, A. Stramel, W. Jahn, D. Suchy. Row 3 — P. Keisler, E. Foerester, C. Follman, C. Seiling, W. Evans, R. Fisher, A. Doyle, H. Shubbe. Row 2 — E. Schmid, R. Heine, Mr. Knake, W. Reike, P. Sharpe, H. Heinberg. Row 1 — R. Henderson, J. Hansing, J. Mangum, C. Caldwell, C. Hendricks, W. Thies, K. Sheer.

### F.F.A.





Row 2 — A. Willem, P. Cole, B. Blaydes, D. Schlie. Row 1 — P. Corbett, M. Green, S. Heiden, K. Hansen.

## Cheerleaders

Row 6 — J. Schumacher, N. Catlow, K. Wallis, V. Norgren, C. Oswald, C. Alger, D. Moebius, M. Novy, D. Novy, D. Cummings, D. Knight, B. Watson, M. Barker. Row 5 — M. Fry, R. Wendt, R. Mess, J. Miller, S. Prochaska, C. Bentson, J. Miller, W. Sommers, S. Heiden, D. Schlie, S. Becker, V. Smith, Mrs. Friberg. Row 4 — M. Hendee, C. Smith, K. Twerdahl, M. Press, S. Sarius, N. Honemann, M. Dieter, P. Roxworthy, G. Meier, R. Willard, C. Wilcox, P. Stiglich. Row 3 — A. Koci, R. Lindberg, K. Harkin, S. Cole, A. Gayer, B. Blaydes, E. Rieke, C. Berg, S. Rice, B. Paulson, G. Griffin, J. Toppe. Row 2 — J. Miller, A. Buffalo, P. Martin, M. Miller, P. Johnson, J. Nightingale, S. Sayre, S. Smith, M. Meehan, L. Brink, V. Sitz, M. Benson, H. Hansen. Row 1 — C. Blackshaw, E. Sabo, D. Kelsey, K. O'Dette, N. Winn, L. Blais, J. Chiles, A. Hartley, C. Jahnke, B. Shepherd.

## G.A.A.



Row 3 — D. Franks, D. Kaufman, R. Strubel, D. Schwemm, W. Woodruff, L. Thomas. Row 2 — R. Sanders, D. Nixon, W. Steward, R. Bruso, Miss Sheel. Row 1 — P. Martin, D. Anderson, L. Witt, B. Cooney, C. Cagney.

## Travel

Row 4 — H. Shatwell, N. Twerdahl, H. Palmer, B. Bernston, J. Condill, T. Ogden, N. Magnuson. Row 3 — R. Haberly, S. Pettise, W. Hile, A. Stresen-Reuter, P. Beardon, C. Thomas, J. McCarthy, T. Mitchell. Row 2 — P. Sharpe, K. Scheer, D. Timm, G. Merritt, L. Schmitz, K. Smith, E. Maha. Row 1 — E. Heinemann, W. Thies, S. Arnold, L. Kelly, D. Bock, K. Peterson.

## Photography



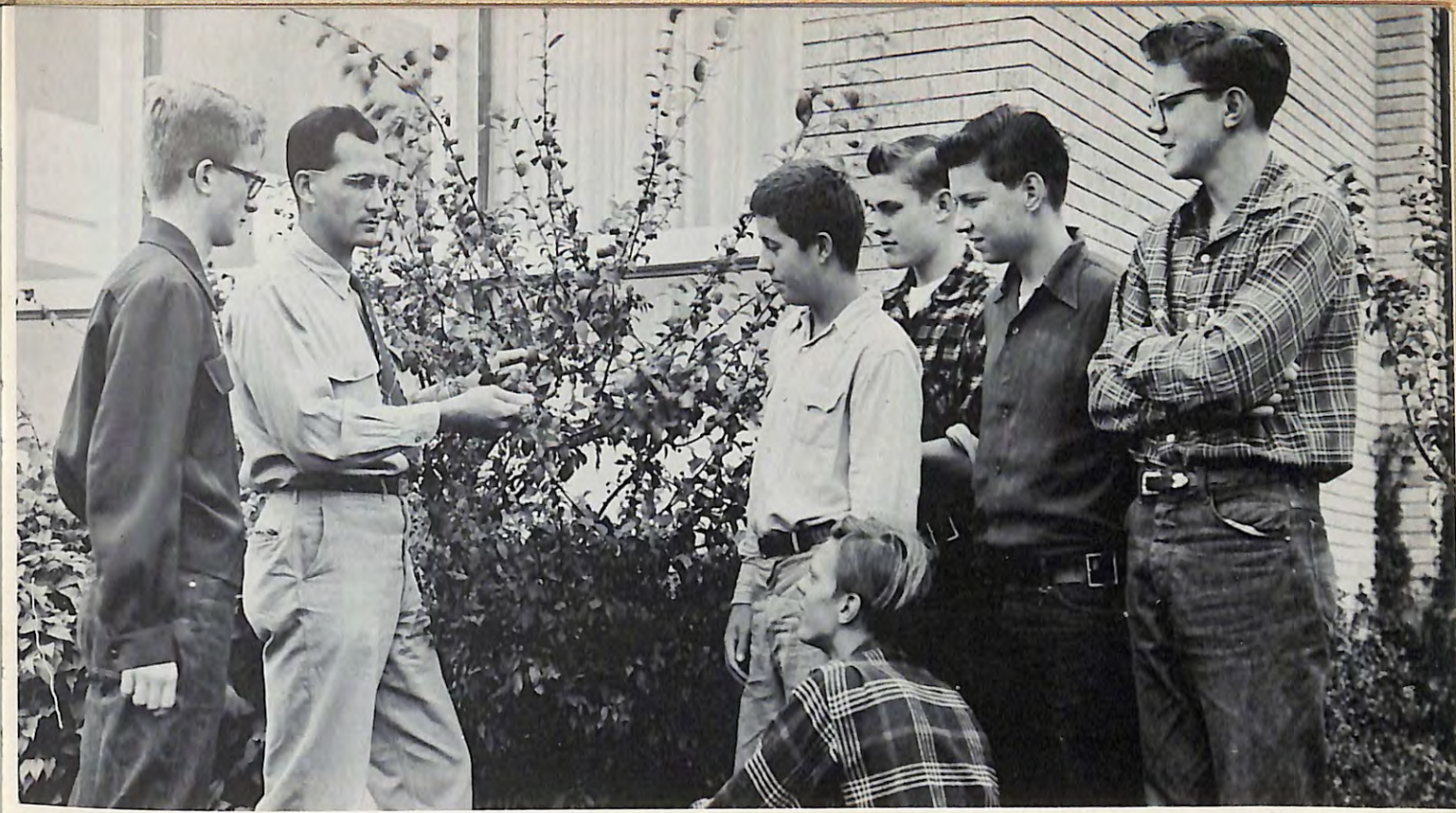


Row 3 — W. Hardt, B. Hegner, E. Heinemann, C. Oswald, Miss Logan. Row 2 — M. McCarthy, S. Bjornberg, D. Meyer. Row 1 — M. Marek, K. McKain, M. Nesler, J. Buckingham.

### F. T. A.

### Natural History

Row 5 — W. Withycombe, D. Kelsey, D. Thompson, C. Urick, J. Marek, D. Staton, A. Vann, D. Bearden, R. Sanders, F. Peck, A. Eslick, S. Hoffman, R. Schoettler, W. Premo, R. Kashinski, D. Suchy, D. Cox, W. Bilke, P. Grinstead. Row 4 — H. Palmer, Mr. Watson, T. Ogden, B. Paulson, M. Wares, P. Roth, L. Kerry, D. Meyer, M. Novy, D. Novy, A. Schroeder, D. Anderson, V. Norgren, L. Witt, D. Schmidt, L. Campbell. Row 3 — A. Baade, R. Willard, D. Oberlin, G. Jahn, B. Meier, M. Beckhart, A. Noble, P. Ferris, D. Linqvist, S. Kincaid, J. Bierman, P. Cole, R. Miller. Row 2 — E. Wegner, B. Blaydes, M. Nesler, Ruth Lindberg, J. Vaughan, C. Cagney, E. Johnson, C. Jahnke, N. Colburn, J. Schumacher, R. Kerin, J. Bonkoski, D. Easterly. Row 1 — V. Smith, S. Becker, D. Schlie, S. Sabo, A. Neuman, D. Kronenberger, D. Grzczka, S. Buschek, S. Vorbeck, J. Bergren, R. Sittig, W. Gibbons.



### Gen. Ag. Club

Standing — W. Hardt, Mr. Knake, E. Merritt, C. Berg, J. Johnson, R. Kashinski. Kneeling — R. Sanders.

Row 5 — P. Sitz, P. Younger, P. Haffner, R. Gould, D. Bohatka, S. Cronwall, R. Schwemm, J. Condill, R. Smith, L. Biesterfeld, R. Heidke, D. Grinstead, P. Rydland, R. Jensen, J. Moore. Row 4 — B. Hawley, S. Richardson, S. Vorbeck, D. Lunquist, C. Schleifer, J. Toycen, V. Soderberg, J. Chambers, N. Meehan. Row 3 — S. Sarius, A. Comes, A. Staton, A. Baade, M. Walbaum, M. Green, P. Roth, L. Kerry, E. Wegner, B. Blaydes. Row 2 — R. Sittig, P. Cole, D. Schmitt, J. Potter, C. Paulson, J. Kensel, H. Marshall, P. Doran, A. Noble, W. Gibbons. Row 1 — Mr. Johnson, J. Robinson, P. Ferris, B. Cooney, C. LeBoy, J. Vaughan, G. Schunk, K. McKain, P. Braddock, J. Peters, L. Campbell, M. Naylor, P. Barton.

### Masque and Wig





Row 2 — J. Orzech, S. Grigsby, L. Kelly, L. Lewellen. Row 1 — Miss Strouss, S. Schunk, D. Meister.

### Sophomore Creative Writing



Row 2 — L. Biesterfeld, S. Cronwall, P. Duran. Row 1 — R. Threlkeld, Mr. Johnson.

### Radio Council

### Projectionists

Row 3 — A. Eslick, H. Shatwell, T. Hargrave, L. Biesterfeld, F. Chambers. Row 2 — P. Lageschulte, S. Petise, B. Lemke. Row 1 — Mr. Siegworth, P. Sitz, J. Toyce, E. Heinemann, J. Condill.



### Modern Dance

Row 3 — A. Buffalo, B. Seiling, W. Gibbons, J. Bergren, L. Sullivan, C. Blackshaw, A. Comes, J. Chiles. Row 2 — B. Shepherd, S. Prochaska, A. Allerton, J. Miller, G. Griffin, M. Peterson. Row 1 — Mrs. Friberg, J. Oswald, N. Winn, D. Cummings, J. Mitana.





Row 2 — C. Cox, P. Marquardt, D. Chamberlin, V. Rand, G. Mayer, J. Troxel, D. Younger. Row 1 — B. Belnap, S. Lowry, Miss Strouss, B. Williams.

### Freshman Creative Writing

### Spanish Club

Row 3 — F. Peck, R. Jensen, J. Hagedorn, R. Smith, R. Porter, W. Bahatka, L. Kerry. Row 2 — M. Green, M. Wares, C. Fifer, D. Lundquist, K. Twerdahl, J. Norbeck. Row 1 — I. Houtz, N. Colburn, R. Goldman, C. Somerville, Mr. Lombardo.



Row 2 — P. Barton, C. Newhall, B. Berndston, S. Cronwall. Row 1 — D. Doolen, P. Braddock, R. White, W. Dow.

### Beautyshoppers and Barbershoppers

Row 4 — D. Suchy, J. Walbaum, D. Kaufman, J. Condill, R. Gardner, T. Ogden. Row 3 — C. Fifer, S. Hoffman, W. Schmitz, R. Larsen, D. Hannah. Row 2 — Mr. Peshkin, K. Harkin, J. Kensel, B. Shepherd, J. Miller. Row 1 — K. Johansen, C. Mee, P. Younger, R. Sittig, J. Briggs.

### Student Council





Row 3 — C. Totman, P. Beardon, H. Dieringer, P. Grinstead, H. Shatwell, C. Dechert, B. Watson. Row 2 — J. Buckingham, J. Miller, P. Simmons, S. Sarius, A. Comes, D. Grzczka. Row 1 — Mrs. Baker, D. Beardon, H. Palmer, D. Craig, S. Richardson.

### Latin Club



### Librarians

Row 2 — D. Anderson, R. Willard, Miss Boling, B. Paulson, G. Schunk. Row 1 — E. Wegner, E. Heinemann, M. Grzczaka, C. Fifer.

### Industrial Arts

Row 4 — A. Eslick, F. Schramm, R. Gardner, D. Kaufman, C. Ahlgrim, J. Beecken. Row 3 — B. Bruckman, D. Bierkness, R. Denson, R. Garite, Mr. Bixler. Row 2 — J. Bischek, D. Miller, R. Gould, R. Brown, R. Dobrich. Row 1 — K. Johansen, W. Schmitz, R. Jurs, C. Brouk, L. Volling.



### Freshman Dramatics

Row 3 — D. Sturtevant, S. Potter, P. Sherrer, C. Totman, J. Nightingale. Row Two — Mr. Lombardo, D. Johnson, J. Miller, W. Sumner. Row 1 — A. Meyer, G. Griffin, J. Hogarth, W. Olesen.





**Freshman  
Typing**

Row 4 — W. Dawson, P. Marquart, R. Robinson, R. Malmgren, T. Sullivan, H. Dieringer. Row 3 — W. Koci, V. Rand, D. Stroh, R. Price, M. Krabbe, S. Johnston. Row 2 — J. Lyons, J. Tiesling, J. Hecht, M. Peterson, E. Thompson, R. Bushek. Row 1 — D. Klaja, M. Fisher, G. Mayers, Miss McBride, W. Shepherd.

Row 4 — J. Fry, R. Goldman, W. Cochran, J. Walbaum, D. Meyer, H. Krumpf, T. Hargrave, S. Cronwall, W. Anderson, H. Nickelson, K. Yaeger, C. Kee, R. Miller, K. Biek, R. Wessel, W. Dow, R. White, H. Michael, J. Fry. Row 3 — H. Hansen, P. Cole, W. Gibbons, S. Sibley, L. Kerry, J. Miller, J. Toycen, S. Swedenborg, H. McIntosh, P. Bunta, J. Aspinwall, C. Somerville, V. Soderberg, M. Walbaum, K. Wallis, P. Galvin, E. Krause, C. Schaefer, K. Kuhlman, S. Sarius. Row 2 — B. Sheperd, C. Paulson, C. LaBoy, C. Schleifer, S. Grigsby, J. Bierman, C. Alger, A. Comes, M. Rice, J. Oswald, K. Twerdahl, K. Griffin, J. Buckingham, P. Corbett, C. Blackshaw, B. Hawley, T. Cochran, A. Staton, S. Rice. Row 1 — J. Peters, S. Becker, D. Schlie, C. Vodnansky, M. Wares, H. Merkel, I. Houtz, R. Sittig, J. Kenyon, C. Newhall, Miss Baer, M. Naylor, A. Braade, P. Braddock, N. Colburn, C. Jahnke, J. Robinson, D. Miller, A. Hartley.

**A Cappella**



**Make-up Club**

Row 4 — C. Buck, D. Easterly, M. Novy, L. Biesterfeld, M. Meyer, D. Meyer, L. Campbell. Row 3 — C. Schleifer, E. Wegner, C. Fifer, R. Porter, J. Toppe, L. Sullivan, D. Schmitt. Row 2 — Mr. Johnson, V. Sitz, J. Ho-garth, C. Vodnansky, C. Berg, K. McKain, A. Younghusband. Row 1 — J. Kensel, J. Peters, J. Toycen.

**Girls'  
Glee Club**

Row 5 — J. Keeleric, L. Kelly, S. Bjornberg, G. Nickelson, J. Pohlman, E. Krause, K. Wallis, D. Cummings, J. Aspinwall, G. Motter, M. Meyer, P. Bunta, C. Hardt, D. Moebius, E. Heinemann, B. Swanson, J. Miller, S. Grigsby. Row 4 — G. Meier, R. Jahn, D. Knight, M. Hendee, S. Harvey, C. Alger, B. Hawley, J. Oswald, L. Kerry, S. Sibley, P. Roth, V. Grace, N. Lawrence, J. Bonkoski, J. Bierman, J. Troxel, A. Staton, K. Harkin. Row 3 — S. Johnson, S. Kinkaid, M. Krabbe, P. Stiglich, J. Kenyon, D. Anderson, B. Stanek, D. Miller, G. Johnson, J. Gould, C. Smith, K. Walker, E. Rieke, M. Miller, A. Koci, A. Younghusband. Row 2 — Miss Baer, J. Vance, A. Weiher, S. Sommers, S. Heiden, R. Wendt, B. Meier, J. Taylor, D. Derry, M. Roesslein, B. Mansfield, G. Jahn, C. Jahnke, J. Lyon, M. Marek, J. Tiesling, C. Behrens, P. Roxworthy, J. Orzech. Row 1 — C. O'Neil, S. Rice, J. Hecht, J. Hecht, S. Swedenborg, M. Benson, N. Hardacre, L. Blais, N. Winn, D. Bock, K. Peterson, A. Buffalo, C. Bentsen.







## Broncho Staff

Row 4 — J. Potter, J. Chambers, B. Swanson, R. Miller, J. Richardson, N. Lawrence, M. Fisher, G. Meier.  
 Row 3 — W. Gibbons, B. Richter, S. Swedenborg, C. Oberst, M. Beckhart, K. Kuhlman, H. Hansen. Row 2 —  
 S. Vorbeck, A. Weiher, B. Shepherd, E. Sabo, A. Gayer, C. Blackshaw, A. Allerton, G. Lynn. Row 1 — Miss  
 Kientzle, D. Kronenberger, R. Threlkeld, J. Robinson, M. Nesler, G. Schunk.

Row 4 — C. Smith, G. Mayers, D. Butz, K. Kampert, V. Norgren, D. Klaja. Row 3 — M. Dieter, S. Prohaska,  
 S. Buschek, C. Wilcox, P. Stiglich, S. Rice, R. Mess. Row 2 — B. Meyer, L. Follman, M. Benson, R. Willard,  
 J. Lyon, J. Tiesling, M. Grzeczka. Row 1 — J. Benson, C. Schaefer, Miss Stevens, J. Schumacher, R. Kerin.

## F.H.A.



Row 4 — B. Dockery, L. Hembrey, W. Honemann, L. Volling, J. Walbaum, K. Biek, P. Sharpe. Row 3 — K.  
 Smith, R. Hood, W. Bohatka, J. Hagedorn, J. Norbeck, R. Larson. Row 2 — R. Finkenstaedt, C. Huss, K. Sever-  
 sen, G. Talmey, D. Derry, I. Thomasson, D. Miller. Row 1 — M. Meyer, B. Belnap, J. Briggs, Mr. Lombardo.

## Chess and Checkers

## Hall Monitors

Row 3 — W. Shatwell, C. Oberst, P. Grinstead, D. Staton. Row 2 — P. Rydland, F. Peck, R. Larsen. Row 1 —  
 G. Meier, M. Nesler, K. O'Dette, J. Bergren, S. Harvey, M. McCarthy. Seated — D. Easterly, Mr. Hylander.





## Stamp Club

Row 2 — C. Totman, P. Nichols, R. Foster. Row 1 — Mr. Peshkin, D. Hannah.

Row 5 — R. Staton, C. Mee, R. Gardner, R. Schwemm, T. Ogden, W. Timm, R. Goldman, P. Sitz. Row 4 — R. Gould, R. Larsen, S. Hoffman, B. Berndston, P. Younger, J. Bergren, K. Kuhlman. Row 3 — P. Martin, T. Weber, J. Toyen, I. Houtz, A. Noble, B. Cooney. Row 2 — Miss Sheel, D. Doolen, P. Ferris, S. Harvey, M. Naylor, C. Paulson, M. Marek. Row 1 — N. Meehan, G. Motter, P. Barton, O. Gardner, K. Twerdahl, C. Somerville.

## R.T.D.C. & D.S.

Row 2 — D. Younger, R. Larson, J. Kensel, F. Hummel. Row 1 — W. Honemann, J. Briggs, H. Palmer.

## Honor Council

Row 3 — A. Allerton, M. Roesslein, H. Marshall, B. Seiling, M. Hendee, D. Doolen, D. Oberlin, A. Willem. Row 2 — M. Gould, J. Keeleric, E. Wegner, R. Malmgren, S. Lewis, T. Sullivan, D. Hannah, C. Brook, R. Evans. Row 1 — H. McIntosh, M. Walbaum, C. Mee, J. Kenyon, Mr. Russo.

## French Club





**Standing** — Mr. Cooley, L. Follman, C. Thomas, J. Marek. **Row 3** — M. Benson, R. Wendt, F. Chambers, N. Winn, G. Cox, D. Chamberlin, R. Threlkeld, M. Marek, C. Dechert, L. Thomas, D. Younger, P. Sitz. **Row 2** — S. Bjornberg, V. Rand, J. Rieke, R. Price, K. Walker, W. Sumner, J. Pohlman, P. Miller, V. Sitz. **Row 1** — M. Hendee, N. Hardacre, J. Benson, B. Mansfield.

## Orchestra



## Girls' Ensemble

**Row 3** — C. Vodnansky, J. Robinson, J. Kenyon, A. Baade, C. Somerville, J. Bergren, J. Oswald, J. Toycen, P. Galvin, D. Doolen. **Row 2** — J. Kensel, A. Hartley, I. Houtz, C. Paulson, B. Shepherd. **Row 1** — J. Buckingham, C. Newhall, J. Peters, B. Hawley.

## Stardusters

**Row 3** — D. Beardon, J. Marek, Mr. Morell. **Row 2** — P. Bunta, C. Brouk, P. Catlow, W. Stirlen, L. Thomas, D. Younger, C. Newhall. **Row 1** — G. Cox, D. Chamberlin, R. Reinke, R. Threlkeld, I. Houtz.



**Row 2** — Mr. Hylander, W. Dawson, D. Stroh, M. Andrae, W. Steward, P. Cagney. **Row 1** — D. Sturtevant, M. Van Horn, D. Younger.

## Freshman Discussion





## Tumbling

Row 4 — Mrs. Friberg, J. Toppe, B. Wegner, D. Cummings, D. Novy, M. Novy, M. Barker. Row 3 — V. Sitz, M. Gould, J. Miller, R. Mess, J. Buckingham. Row 2 — B. Van Diver, J. Miller, S. Seher, M. Meehan, A. Koci, S. Smith. Row 1 — M. Hendee, P. Corbett, K. Hansen, N. Meehan.



## 1954 Tennis

Row 2 — R. Schwemm, T. Ogden, T. Reed, R. Strubel, Mr. Lombardo, J. Lageschulte, E. Twerdahl, J. Strothman, S. Cronwall. Row 1 — R. Brusio, R. Scherf, T. Weber, D. Braddock, W. Dow.

Row 2 — H. Palmer, R. Stebbins, C. Brouk, W. Timm, Mr. Siegworth, J. Lageschulte, J. Wagner, D. Thompson, D. Beardon. Row 1 — K. Fredin, R. Reinke, P. Sitz.

## 1954 Golf

## 1954 Track

Row 2 — Mr. Frederick, D. Flock, F. Schramm, R. Isett, R. Napier, J. Babb, R. Popp, R. Lindberg, S. Schubbe, P. Jensen. Row 1 — T. Reed, J. Walbaum, R. Jurs, R. Larson, M. Frey, R. Peck, J. Lageschulte, W. Miller, M. Lipofsky.





Row 2 — C. Anderson, D. Kaufman, H. Nickelson, P. Catlow, R. White, R. Simmons, D. Brandt, L. Thomas, W. Stirlen, H. Michael, D. Timm, Mr. Gaffney. Row 1 — M. Romanski, J. Beecken, G. Vickers, D. Meister, P. Beardon, F. Peck, P. Rydland, W. Schmitz, E. Foerster.

### Frosh-Soph. Baseball, '54



### Freshman Football

Row 4 — J. Norbeck, D. Sturtevant, F. Chambers, J. Richardson, J. Hagedorn, D. Nixon, N. Isom, C. Berg, S. Lewis, W. Honemann, W. Bohatka, M. Banks, L. Devereau. Row 3 — V. Rand, J. McCarthy, R. Hood, P. Nichols, R. Prestidge, P. Sherrer, T. Mitchell, W. Steward, C. Potter, W. Thorpe, D. Miller, A. Stiresen-Reuter, Mr. Siegworth. Row 2 — R. Finkenstaet, R. Dobrich, S. Harkness, W. Shepherd, J. Treat, W. Olesen, P. Saindon, J. Rieke, R. Dobrich, T. Hunter, P. Miller, P. Lagerschulte. Row 1 — S. Pettise, B. Williams.

### 1954 Varsity Baseball

Row 2 — F. Duda, J. Pittenger, R. Dewitz, D. Welch, R. Hartwig, D. Grom, J. Briggs, D. Sharpe, Mr. Madding. Row 1 — T. Langos, D. Matteson, D. Suchy, R. Goldman, J. Soos, T. Reetz, E. Darken, R. Gould, R. Wessel.

Row 3 — R. Hansen, S. Lewis, R. Strubel, N. Isom, C. Berg, R. Porter, D. Brandt, L. Hembrey, D. Meyer, M. Lipofsky. Row 2 — V. Rand, J. Hagedorn, F. Chambers, R. Schoettler, F. Peck, W. Stirlen, L. Thomas, J. Richardson, D. Grinstead, R. Prestidge, Mr. Madding. Row 1 — E. Thompson, J. Wagner, J. Treat, J. Fry, S. Potter, R. Peters, W. Bohatka, W. Thorp, W. Honemann, H. Michael, J. Orzech, L. Devereau.

### Frosh - Soph Football



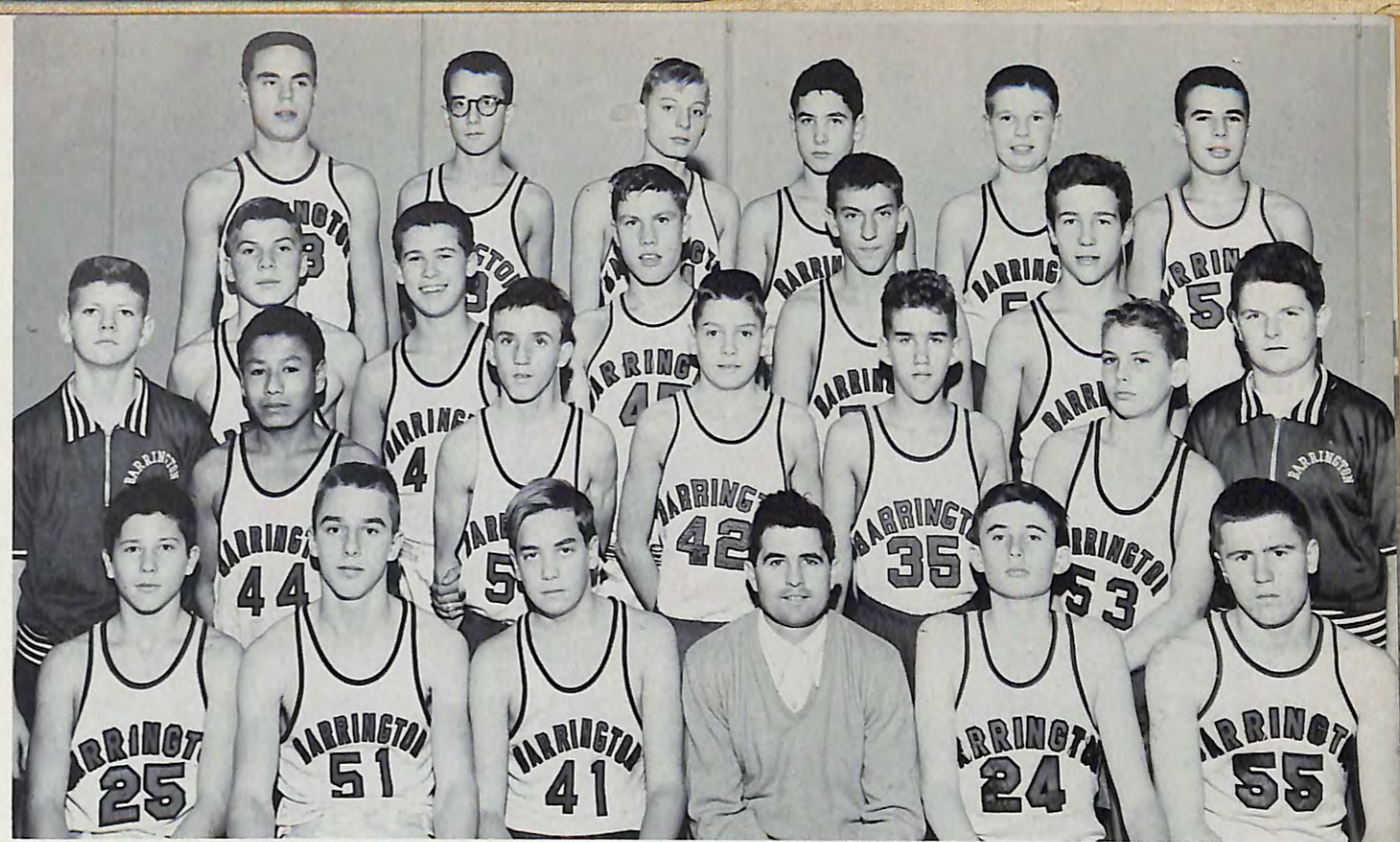


## Varsity Football

Row 3—P. Younger, D. Matteson, R. Larson, B. Goldman, T. Odgen, B. Dow, P. Rydland, R. Miller, D. Bearden, R. Stebbins. Row 2—Mr. Fredrick, D. Thompson, R. Isett, D. Sucky, L. Newberg, H. Palmer, R. Krog, R. Lichhardt, R. Brusso, F. Schramm, Mr. Murphy. Row 1—J. Walbaum, D. Welch, W. Miller, J. Briggs, R. Heidke, K. Yeager, W. Timm, W. Cochran, R. Threlkeld.

Row 3—T. Langos, W. Cochran, R. Goldman, R. Miller, F. Hummel, D. Thompson. Row 2—Mr. Murphy, R. Jurs, R. Reinke, H. Palmer, J. Condill, W. Premo, Mr. Madding. Row 1—W. Dow, R. Schwemm, C. Oberst, W. Miller, J. Walbaum, T. Folleth.

## Varsity Basketball



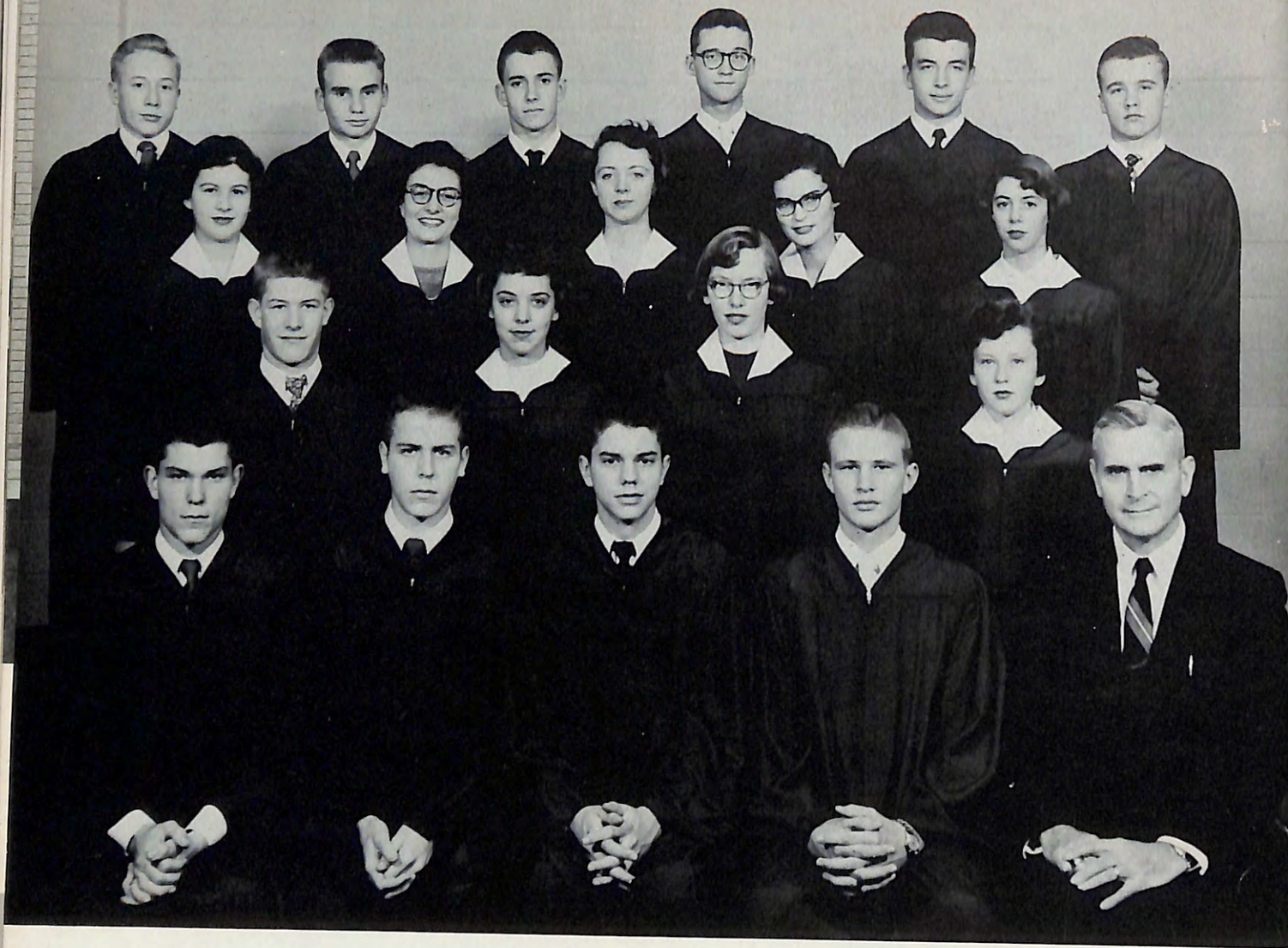
## Freshman Basketball

Row 4—J. Richardson, W. Koci, W. Oleson, J. McCarthy, M. Andrae, W. Thorp. Row 3—W. Bohatka, M. Banks, C. Berg, A. Kellog, R. Malmgren. Row 2—W. Shepherd, R. Buffalo, P. Miller, T. Huter, K. Seversen, S. Harkness, D. Miller. Row 1—J. Norbeck, J. Hagedorn, R. Denson, Mr. Murphy, D. Sturtevant, W. Hone-mann.

## Frosh. - Soph. Basketball

Row 3—D. Miller, D. Meister, W. Shepherd. Row 2—J. Wagner, H. Michael, K. Biek, R. White, W. Thorp, Mr. Murphy. Row 1—M. Lipofsky, C. Berg, D. Brandt, R. Hansen, W. Stirlen.





Row 4 — P. Sitz, R. Larson, R. Threlkeld, J. Briggs, T. Ogden, P. Younger. Row 3 — J. Robinson, J. Kensel, P. Ferris, M. Walbaum, A. Noble. Row 2 — P. Martin, B. Blaydes, M. Nesler, G. Lynn. Row 1 — R. Heidke, H. Palmer, R. Schwemm, K. Johansen, Mr. Watson.

### National Honor Society

The following group pictures are left out because they were spoiled by certain members of the group who made faces: B CLUB, BAND, BOYS' GLEE CLUB, and SQUARE DANCE CLUB.



# This Is Your Life



1954 Junior-Senior Prom  
 1. Last Dance.  
 2. Grand March.  
 3. Go, Go, Gib!!  
 4. Penthouse Serenade.  
 5. May I Have This Dance?



1954 Homecoming  
 1. The Queen and Her Court.  
 2. Barrington's Can-Can Girls.  
 3. Hail to the Queen.  
 4. Winning Junior Float.



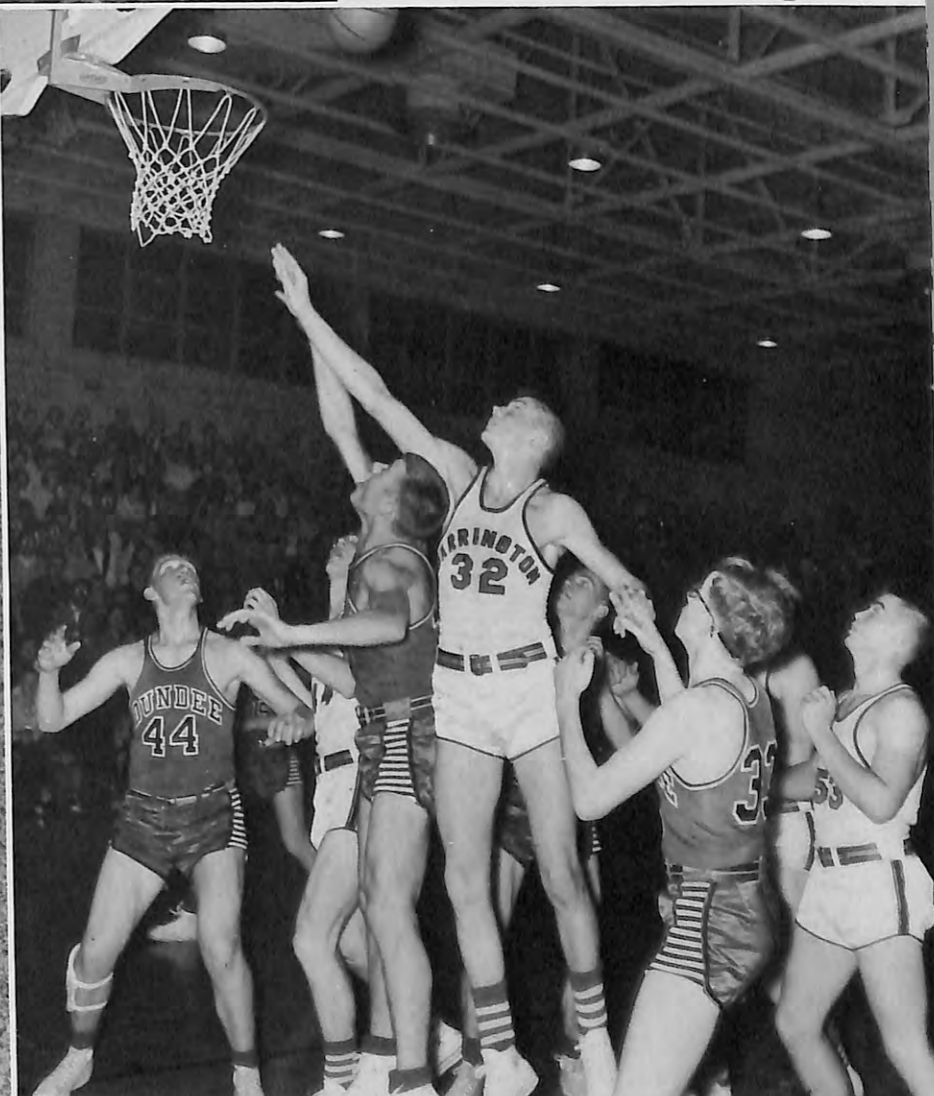




1. Those Helping Hands.  
 2. B.H.S. History Makers of Tomorrow.  
 3. The Wings of Mercury on Our Norm.  
 1954 Latin Club Assembly.



1. Did Mr. Bixler beat them to it?  
 2. Henry Michael at practice.  
 3. John Beecken shows Fresh-Soph form.  
 4. Barrington 81. Dundee 71.





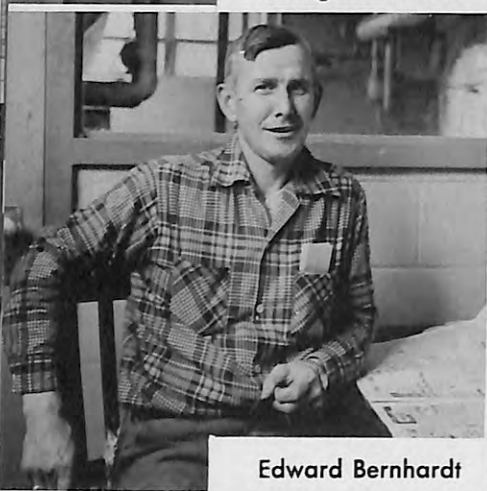
George Wisniewski



Trevor Jones



Peter Haag



Edward Bernhardt



Virgil Edwards



Roland Street



The men who keep our house in order.

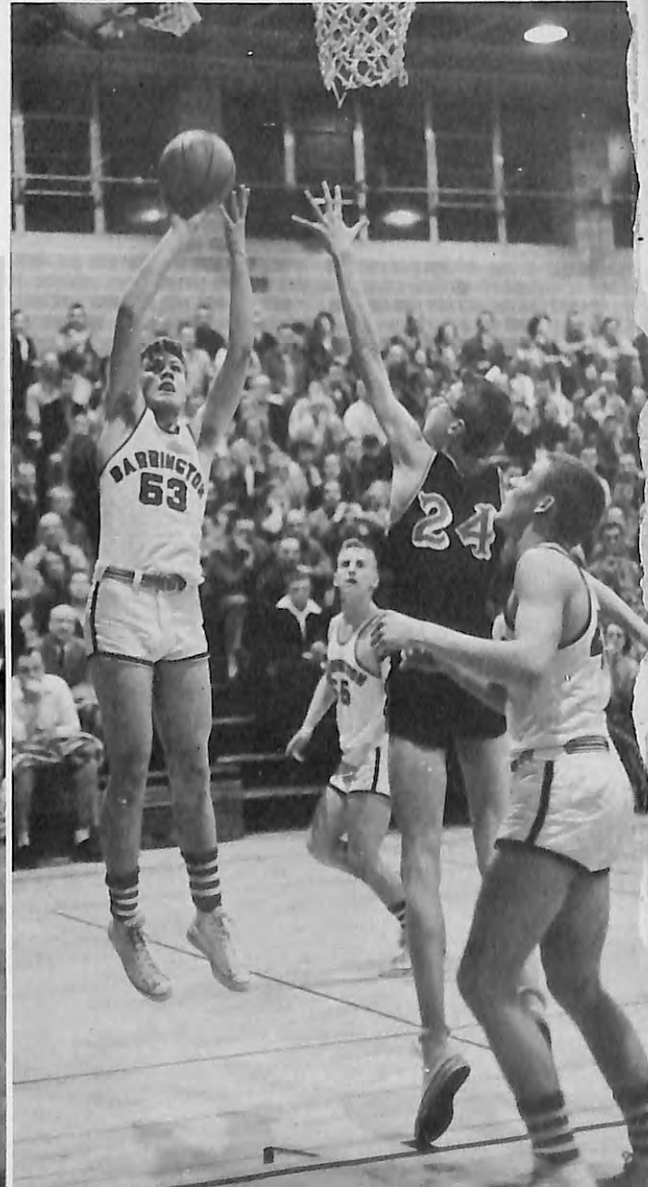
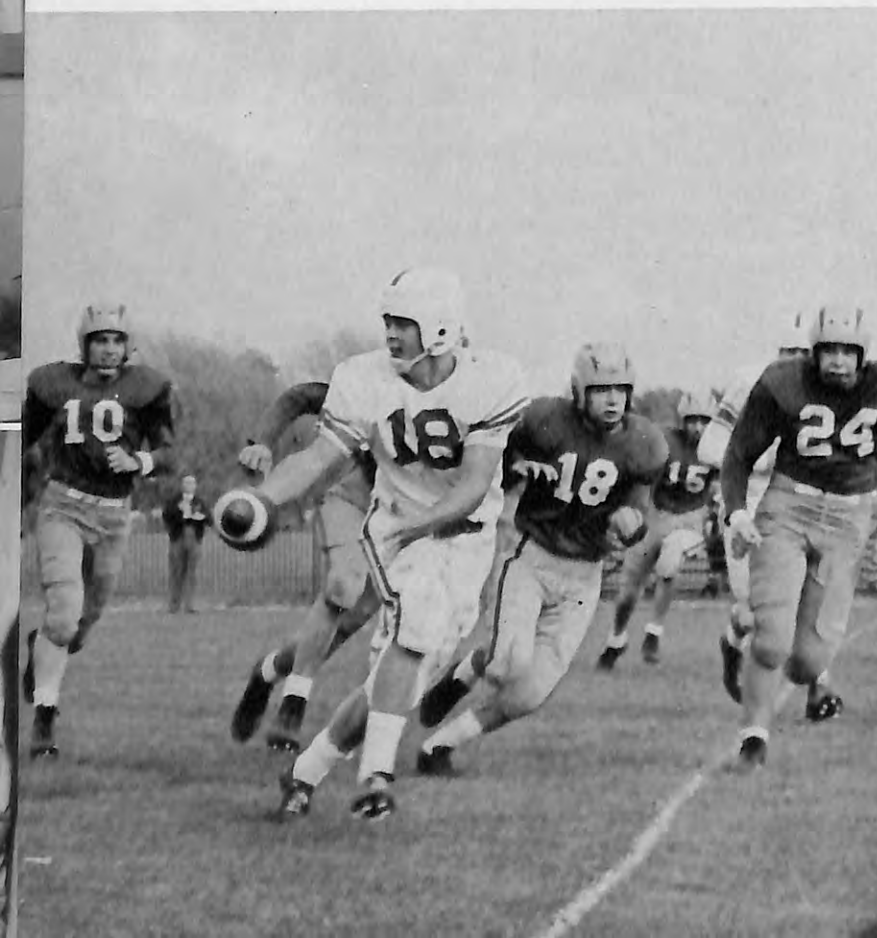


OR CHOC	
TYPE A LUNCH	35¢
ADULT LUNCH	40¢
A LA CARTE	
SOUP	10
FRUIT	5
SALAD	5
APPL	
JELL	

1. Our favorite pastime.
2. Gertrude Kerin
3. Nellie Woods
4. Eleanor Fredig
5. Clara Melow and Emma Kerin



1. Oh that helmet, number 80!  
 2. Wasn't that a touchdown, John?  
 3. Our team is really "walking on air."



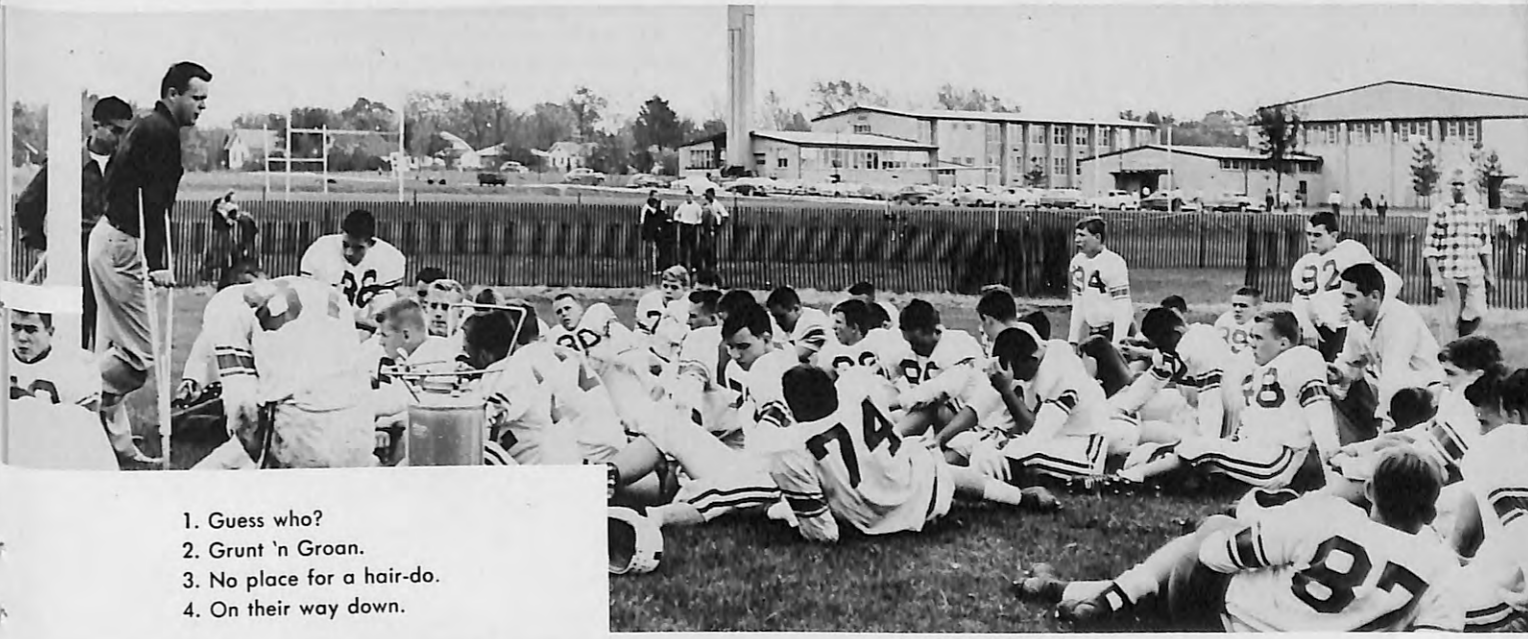
1. Or if you like the smaller college . . .  
 2. Mary lights the candle of service.  
 3. Lunch hour bottle-neck  
 4. Senior Class Rummage.





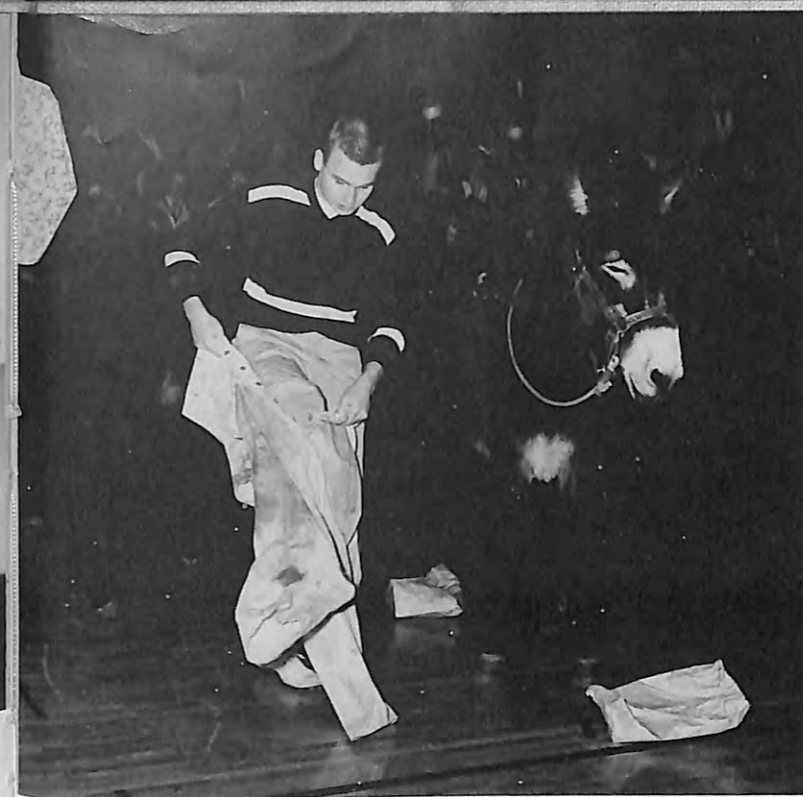
Mr. Foster . . . . .	Stan Cronwall
Mary Herries . . . . .	Irene Houtz
Lucy Weston . . . . .	Pat Cole (NT)*
Rose . . . . .	Julie Kenyon
Phyllis Glenning . . . . .	Mary Walbaum (NT)*
Peter Stantard . . . . .	Paul Younger
Henry Abbott . . . . .	Ronald Heidke (NT)
Ada . . . . .	Edith Wegner
Doctor . . . . .	Bob Gardner
Mr. Edwards . . . . .	Jim Briggs
Mrs. Edwards . . . . .	Nancy Meehan (NT)
Aggie Edwards . . . . .	Diane Schlie
Gustav Rosenberg . . . . .	Phil Grinstead

# "KIND LADY"



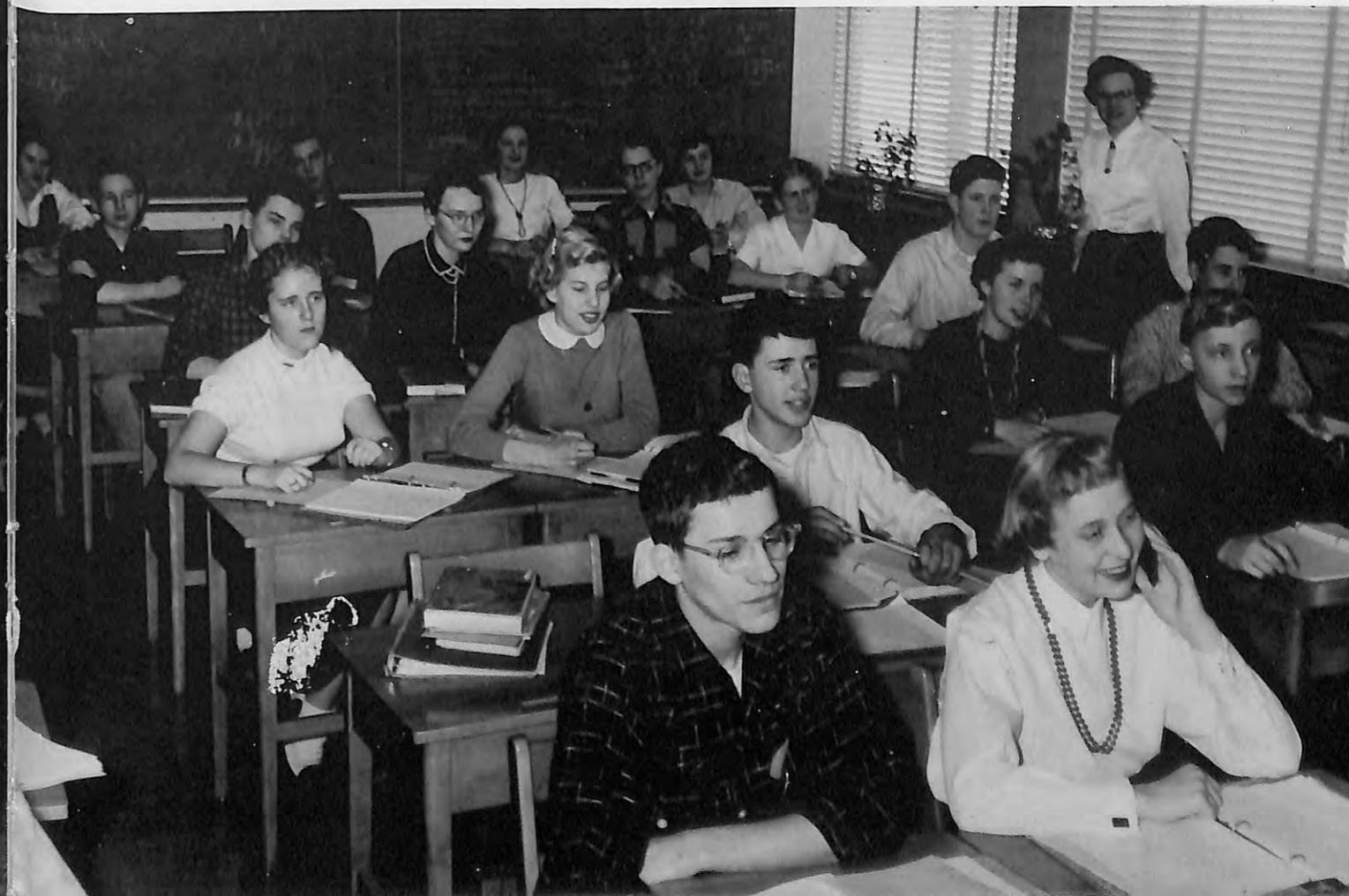
1. Guess who?
2. Grunt 'n Groan.
3. No place for a hair-do.
4. On their way down.





1. Conservation minded people.
2. Harry makes the Variety Show.
3. Swinging partners at the Folk Festival.
4. We visit Scholastic Art Exhibit at Evanston.
5. Everybody happy?

1. The Donkey has longer ears.
2. Freshman Lincoln units.
3. McNamara Threlkeld.
4. Looks posed, doesn't it.





1951



1952

**BUILDING TRADES**

The Building Trades House is a means by which boys in their Junior and Senior years in high school can gain practical, preapprenticeship experience to help them make an advantageous entry into one of the various trades as a career.

All the carpentry work, interior finish, and decorating was done by the Building Trades classes under the supervision of their instructor, Vecal P. Lager. The boys assisted local tradesmen in masonry, plumbing, and the electrical wiring.



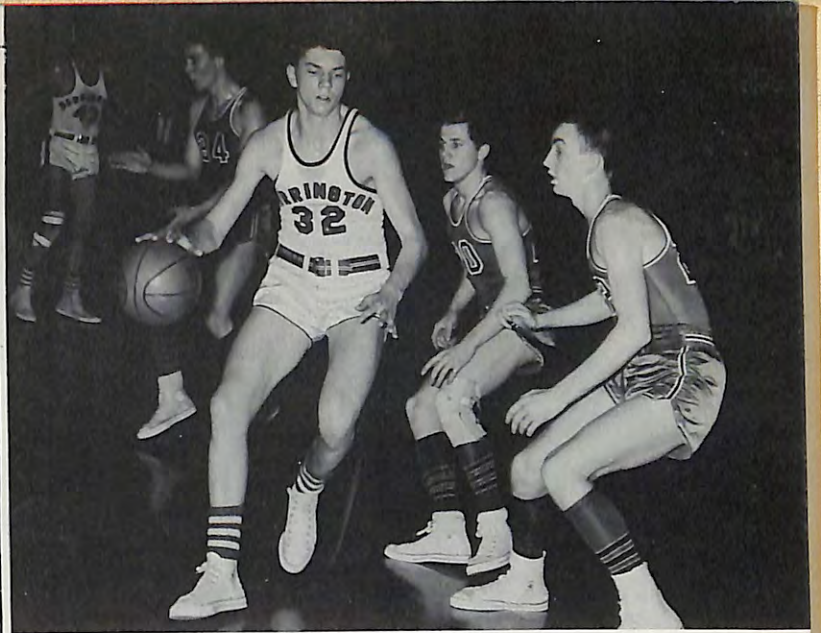
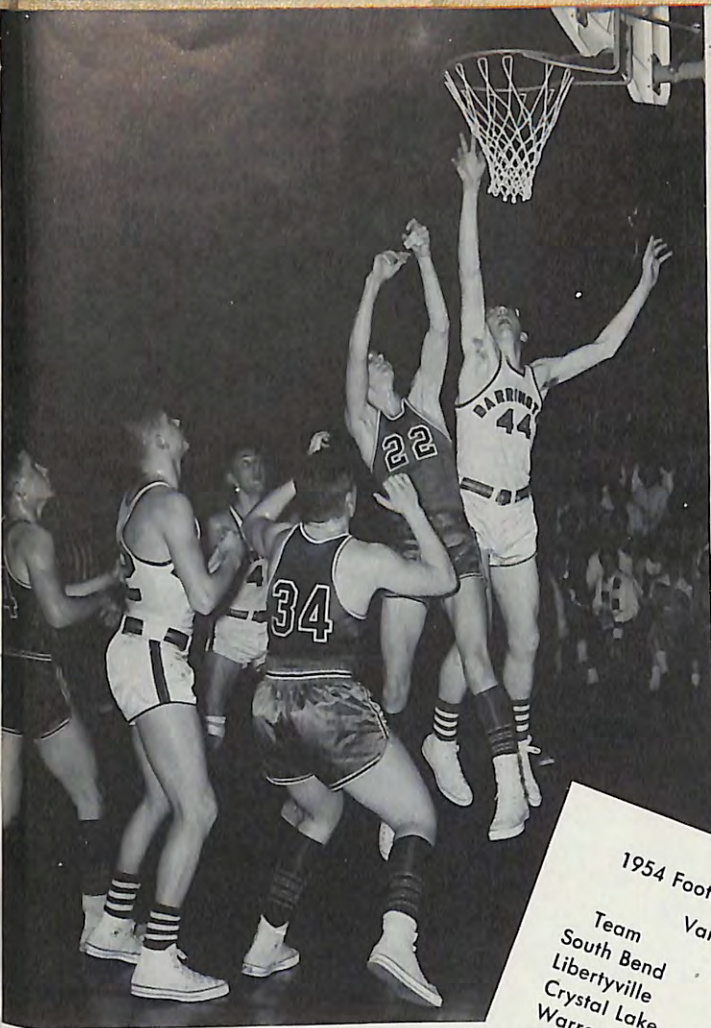
1953



1954



1955



**1954 Football Statistics**

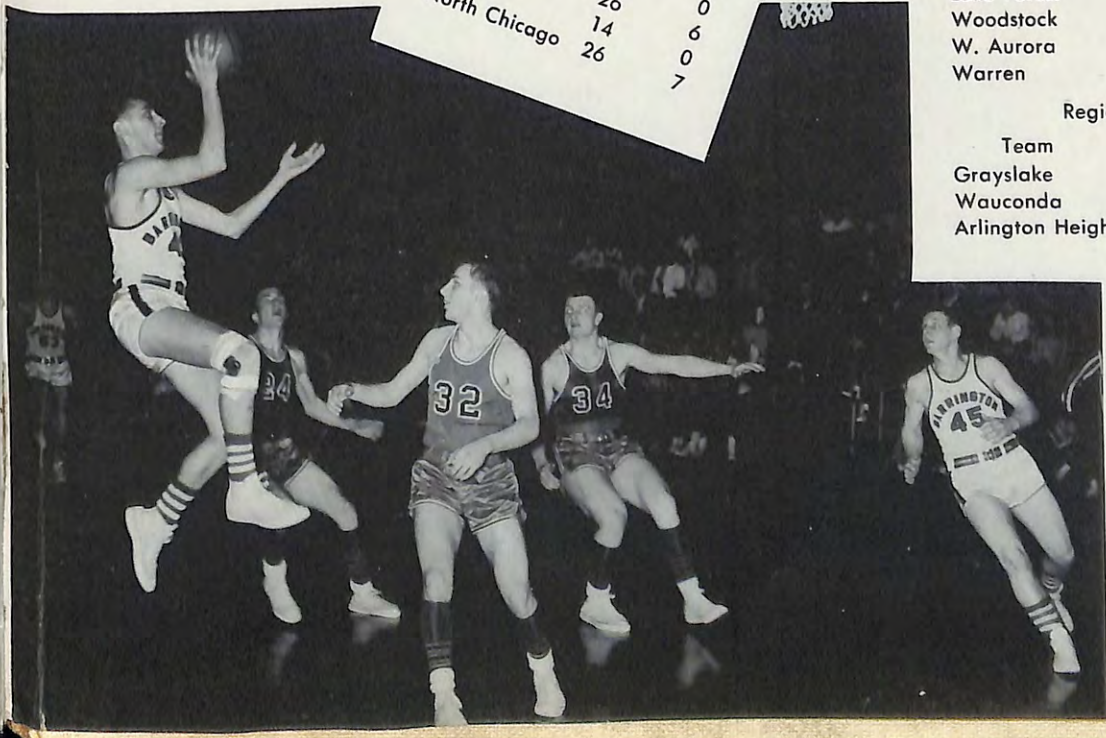
Team	Varsity	We	They
South Bend	12		6
Libertyville	14		0
Crystal Lake	13		33
Warren	19		18
McHenry	14		21
Lake Forest	13		19
Woodstock	19		13
Zion	0		18
Palatine	Frosh - Soph		
Dundee	6		0
Elgin	6		13
Dundee	12		0
Waukegan	32		0
Elgin	26		6
North Chicago	14		0
	26		7

**Season Basketball Scores 1954 - 1955**

Team	Place	We	They	We	They
		Varsity		Frosh-Soph	
McHenry	H	65	54	43	40
Dundee	H	43	48	46	36
Libertyville	T	61	44	41	24
East Rockford	T	69	78	53	55
Crystal Lake	H	62	47	41	33
Zion Benton	T	69	45	42	30
Lake Forest	T	82	72	55	63
Palatine	H	64	51	49	21
Oak Park	T	79	68		
Waukegan	H	70	57	30	46
Woodstock	H	78	46	48	24
Dundee	T	81	71	46	52
Warren	T	69	60	64	23
Mooseheart	H	64	50	41	46
McHenry	T	78	61	57	38
Libertyville	H	79	58	54	29
Marmion	H	80	55	28	44
Crystal Lake	T	76	61	48	40
Zion Benton	H	93	48	60	30
Lake Forest	H	45	32	42	48
Woodstock	T	48	49	53	40
W. Aurora	T	65	53	48	28
Warren	H	78	64	43	30

**Regional Tournament**

Team	We	They
Grayslake	90	55
Wauconda	82	63
Arlington Heights	56	64





A/2C Richard W. Miller  
United States Air Force  
March 9, 1933 — Dec. 29, 1954  
Class of 1952, Barrington High School

*Myers*  
YEARBOOKS  
*in deep tone*

PACEMAKERS  
OF QUALITY



COVER BY  
MYERS